



3 BHK Premium Residences & Retail Shops





Success Redefined

Experience a retail space designed
for success that offer the right location,
visibility & endless possibilities.





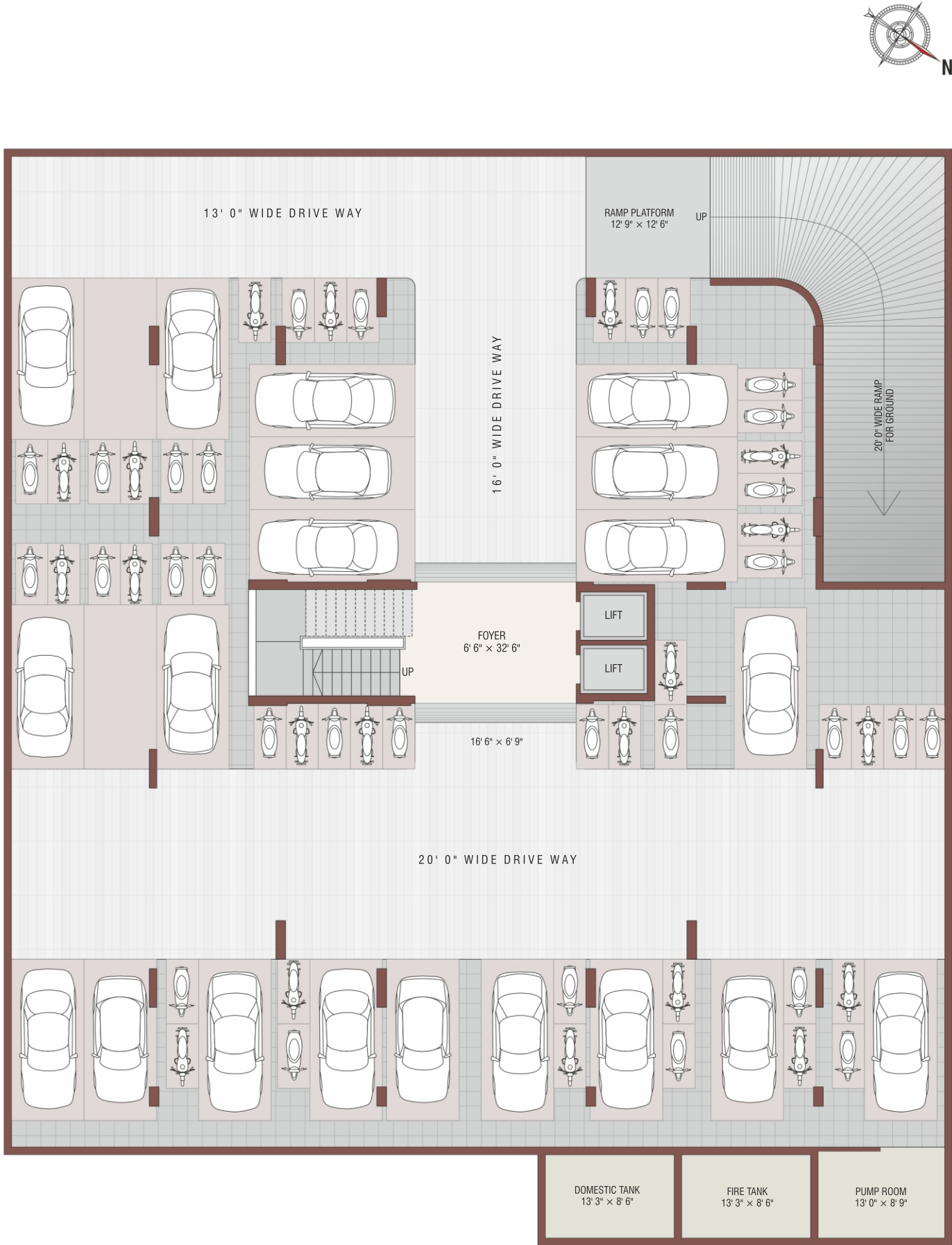
Elegance Reimagined

Experience the perfect blend of
modern living & timeless elegance in
our exquisite residences



Basement

FLOOR PLAN

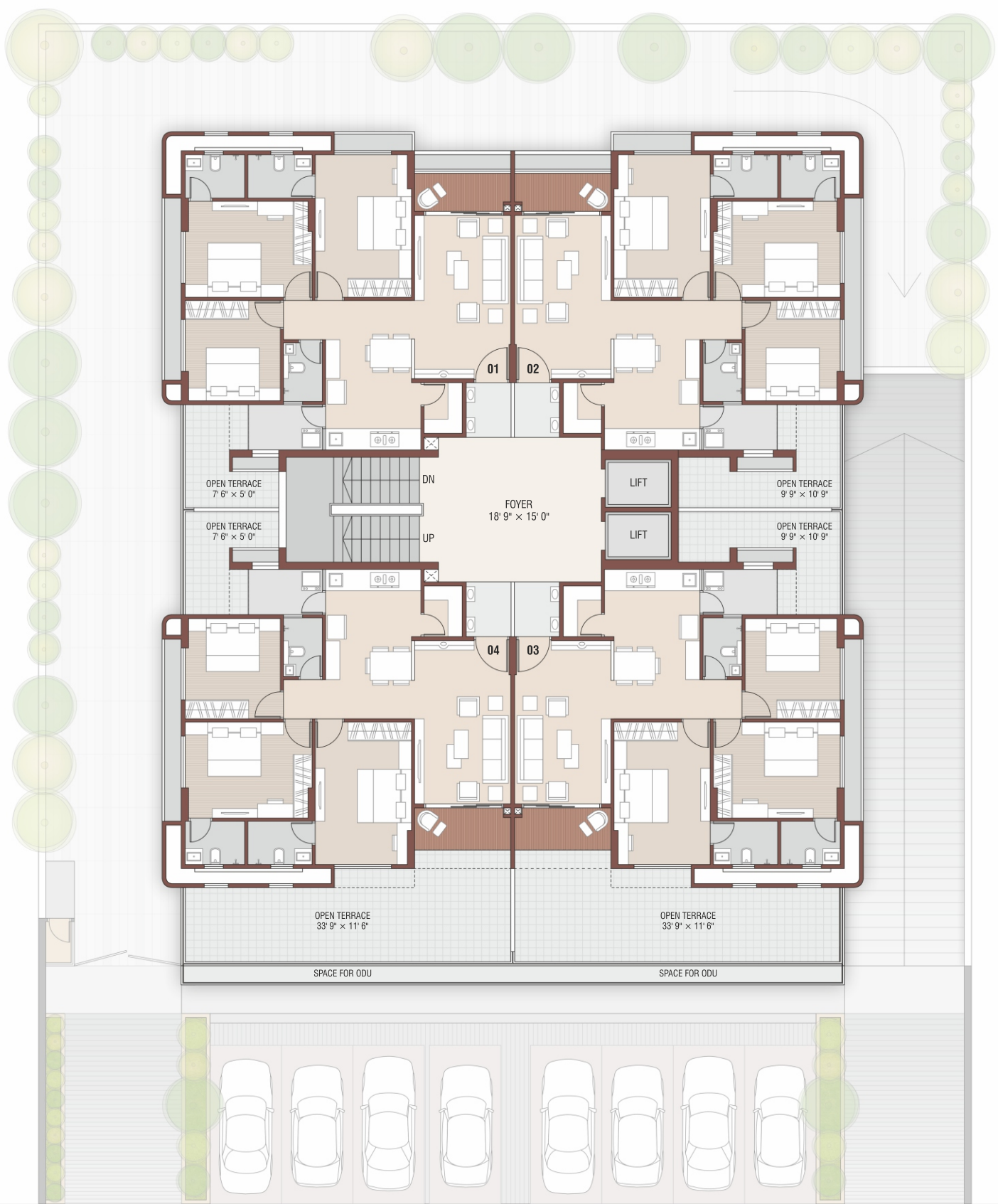


Ground

FLOOR PLAN



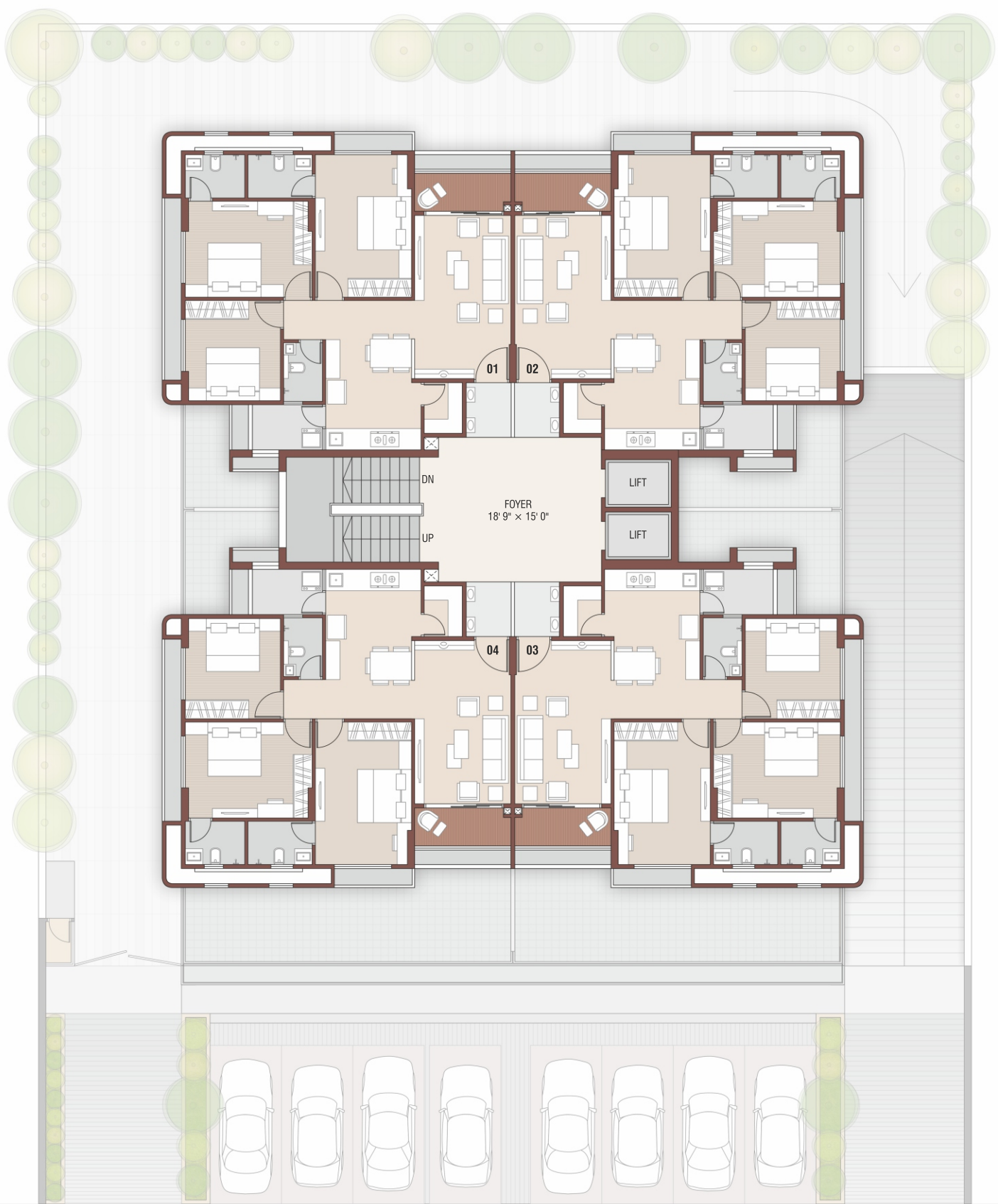
First
FLOOR PLAN



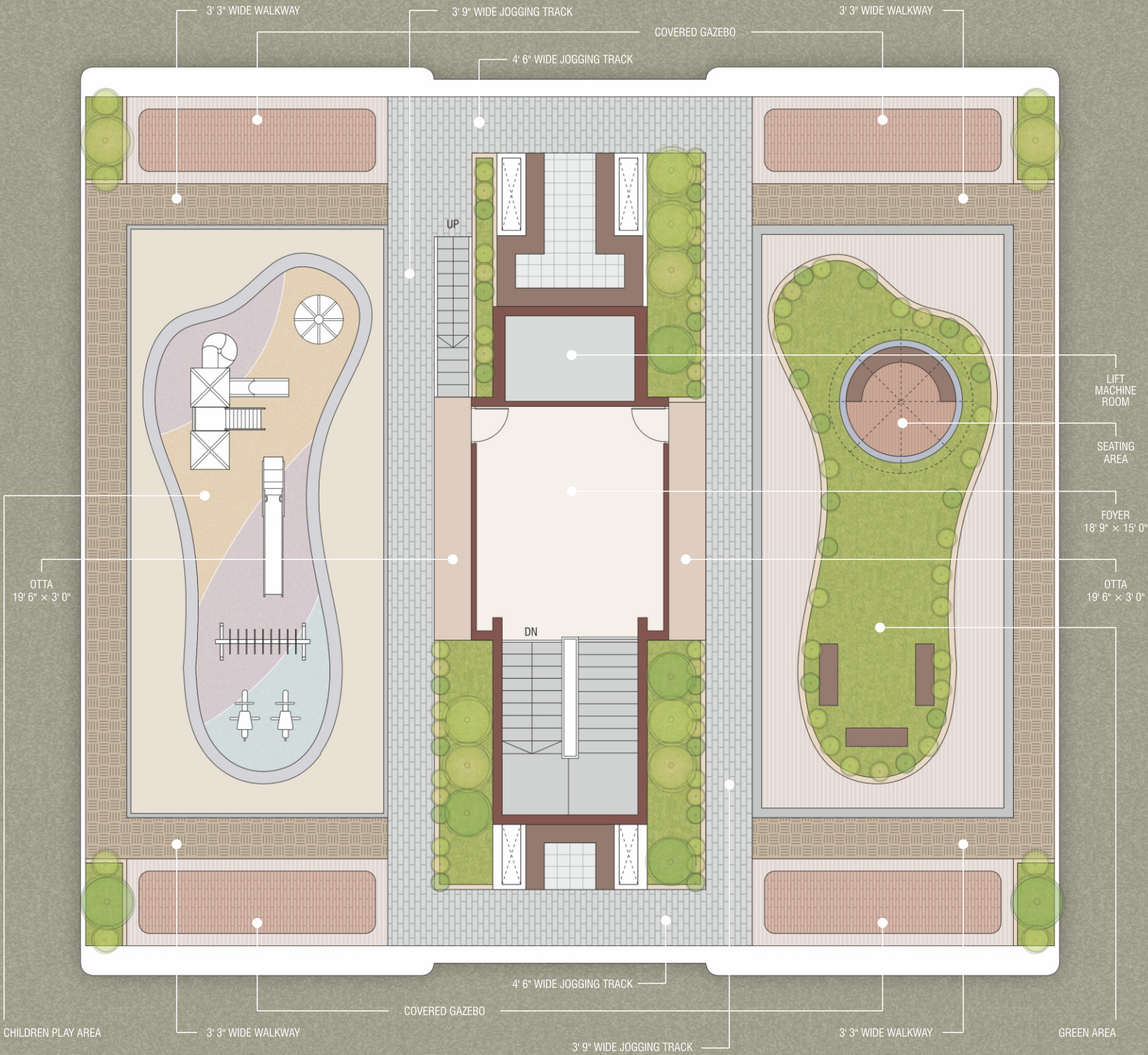
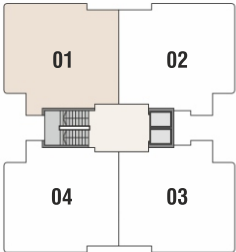
Typical
FLOOR PLAN



2nd TO 7th Floor



Unit PLAN



Specifications

STRUCTURE

- RCC frame structure.
- Structure design as per IS code considering earthquake resistance.

PLUMBING

- Concealed plumbing with premium quality pipes and fittings.
- For continuous water supply, a common borewell.

KITCHEN

- Ready to use granite finished platform with SS sink.
- Designer glazed tiles with dado up to beam level and also below the platform.
- Electrical point for microwave and mixer.
- Plumbing and electrical provisions for water purifier & washing machine.
- Kota stone self in store room.

ELECTRIFICATION

- Concealed copper flexible wiring with adequate number of electrical points & branded modular switches.
- TV point in drawing room and TV & AC points in one bedroom.
- Centralized distribution board with MCBC & ELCB for safety protection.

WALL

- All internal wall will be finished with putty over mala plaster.
- All external wall will be finished with double coat mala plaster with texture finish.

FLOOR FINISH

- Premium quality vitrified tiles in drawing, dining, kitchen & all bedrooms.

DOORS & WINDOWS

- Decorative wooden polished main entrance door wit brass fitting and fixtures.
- All other doors are flush doors.
- Fully/glazed aluminium domal section windows with stone revile.

TOILETS

- Full covered elegantly designed toilets with designer tiles and colour coordinated sanitaryware.

TERRACE

- Open terrace finished with suitable water proofing & china - mosaic flooring for heat reflation.

FIRE

- Government approved fire safety system.



DISCLAIMER • This brochure and model are not part of any legal documents. • All dimensions / measurement given are unfinished and approximates. • The photographs & impressions are for reference only. Actual building may very from the representations mentioned in the brochure. • This is not an advertisement within the meaning of RERA. This is nor an offer, invitation or commitment of any nature. Receipts are advised to appraise themselves of the necessary and relevant information of the project prior to making any purchase decisions of the flat shall be as per the final agreement between the parties. • *Subject to Ahmedabad jurisdiction • T&C applicable*.



RERA NO.: PR/GJ/AHMEDABAD/AHMEDABAD CITY/AUDA/MAA13064/040324/310127

PROJECT MANAGED BY:
AARAT DEVELOPERS

Dhivish
INFRA TECH

STRUCTURE



SHREEJI STRUCTURAL

ARCHITECT



SHREEJI STRUCTURAL

INTERIOR



STUDIO AVISA

MEPF



TRiMiTY CONSULTANTS

Site Address:

VISHVAM ENCLAVE

Near Nirgun Rise, B/s DPS School,
DPS-Bopal Road, Ahmedabad - 380 059.

info@aaratdevelopers.com

+91 95120 90202

DESIGN : 94263 55033