





Experience the epitome of comfortable living at Savera Prambh, a captivating residential haven crafted by the visionary Shyaswa Group.

Nestled amidst serene landscapes, this harmonious sanctuary boasts exquisite apartments and a wealth of amenities. From the tranquil swimming pool and lush gardens to the state-of-the-art home theatre and empowering gym, every detail is meticulously designed to immerse you in a world of refined elegance, where cherished memories are woven and dreams find their true home.

3&2

— BHK —

**HOMES
WITH MODERN AMENITIES**

EXPERIENCE THE ESSENCE OF HARMONY

Savera Prarambh's Harmonious Trio of Residential Blocks

A Residential Haven with 220 Exquisite Apartments.
Discover the Perfect Home in our Exclusive
Collection of 3BHK & 2BHK Homes, Spread Across
14 Floors in Each Block. Experience Unparalleled
Living with No Commercial Spaces, Where Every
Detail is crafted for Your Comfort and Convenience.









GROUND FLOOR plan

- 01. Entry/Exit
- 02. Security Cabin
- 03. Drop Off Zone
- 04. Water Body
- 05. Yoga
- 06. Gymanisium
- 07. Water Cooler
- 08. Toilet
- 09. Change Room
- 10. Toilet
- 11. Sit Out
- 12. Children Play Area
- 13. Change Room
- 14. Swimming Pool
- 15. Multipurpose Hall
- 16. Wash Area
- 17. Service Kitchen
- 18. Toilet
- 19. Out Door Toddlers Play Area
- 20. Toddlers Play Area
- 21. Home Theatre
- 22. Indoor Games
- 23. Garden Lawn Area
- 24. Gazebo Sit Out
- 25. Dg - Sub Station

Indeed, Savera Prarambh is surrounded by abundant greenery, boasting an array of amenities at every turn, promising you moments of enjoyment, wellness, leisure, and relaxation.

With a plethora of exceptional amenities, you'll find yourself occupied within the community, eliminating the need to venture beyond its gates for entertainment or recreation.

AMENITIES & FEATURES

						
Swimming Pool	Senior Citizen Park	Children's Play Area	Yoga Center	Gazebo Seating	Indoor Gym	
						
Mini Theater	Toddler's Play Area	Multi-Purpose Community Hall	24 x 7 Security	2-Level Basement Parking	Landscape Garden	Walking Area
						
School Pickup/ Drop Area	Indoor Games	Club House	CCTV Cameras	24 Hours Water	Fire Safety	





TYPICAL
FLOOR
plan

SOPHISTICATION IN
Style



SPACIOUS Living



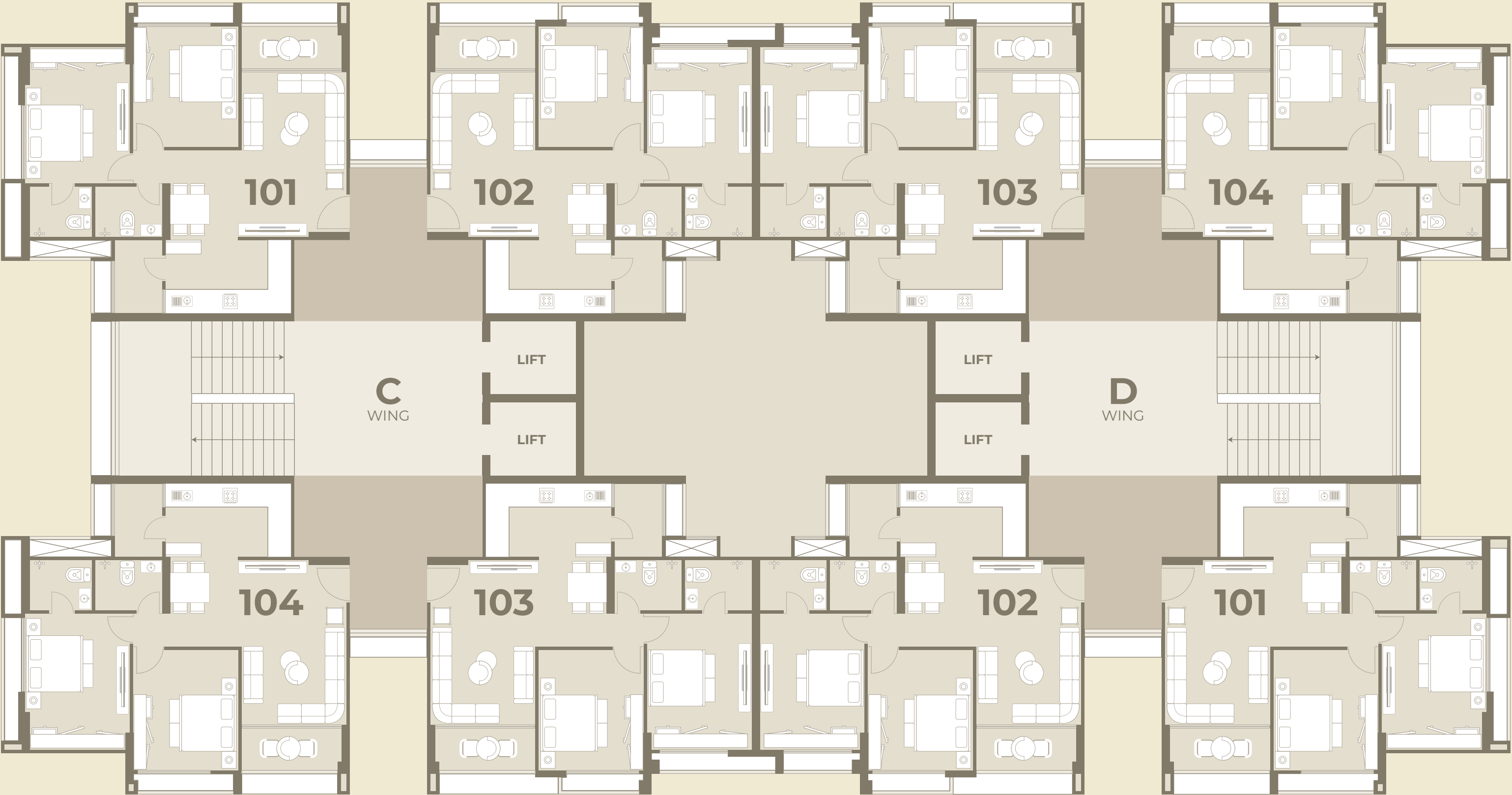
Urban
CHARM

Opulent
OASIS

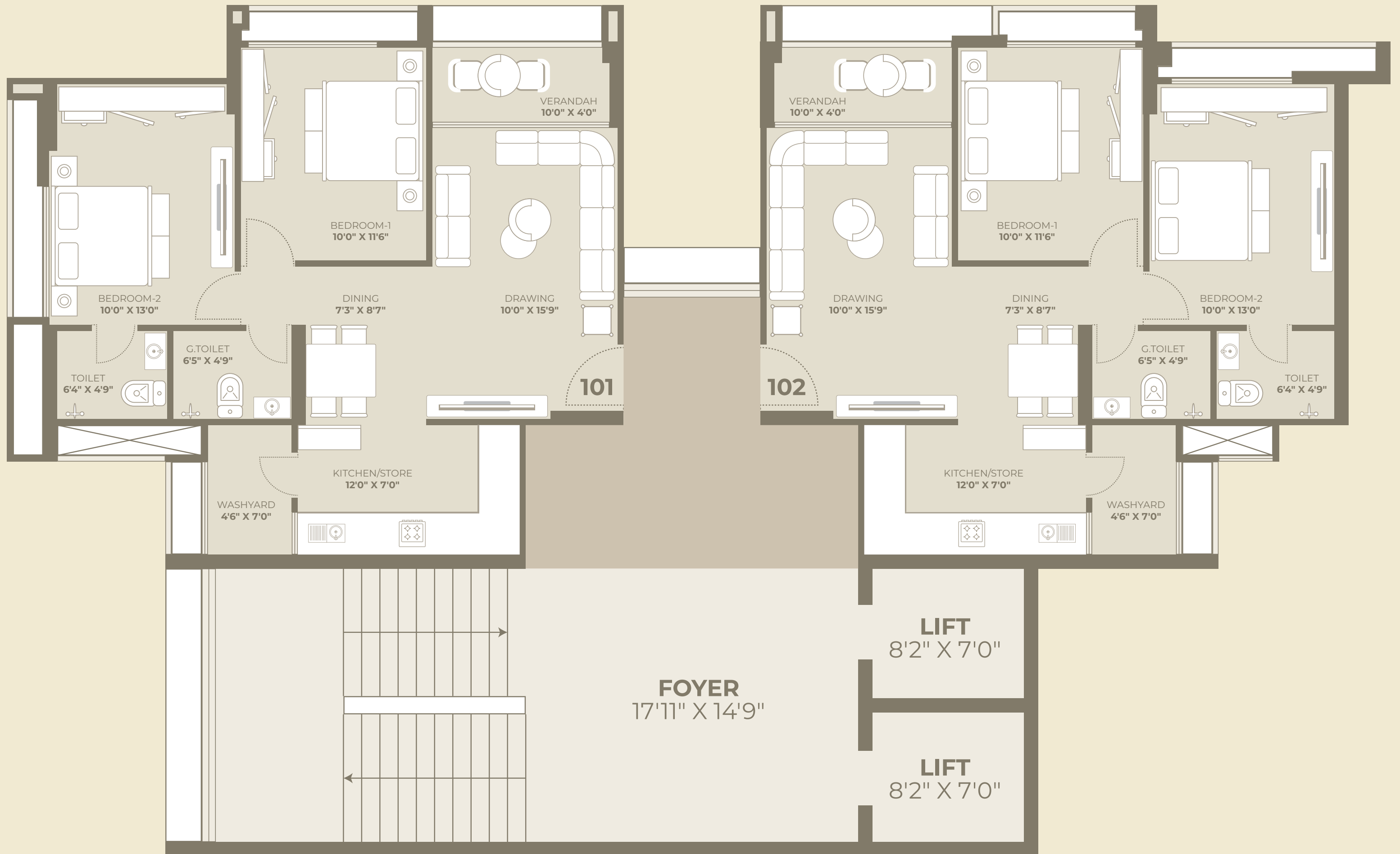
MODULAR
Masterpiece



2 BHK
Block plan
(C & D Wings)



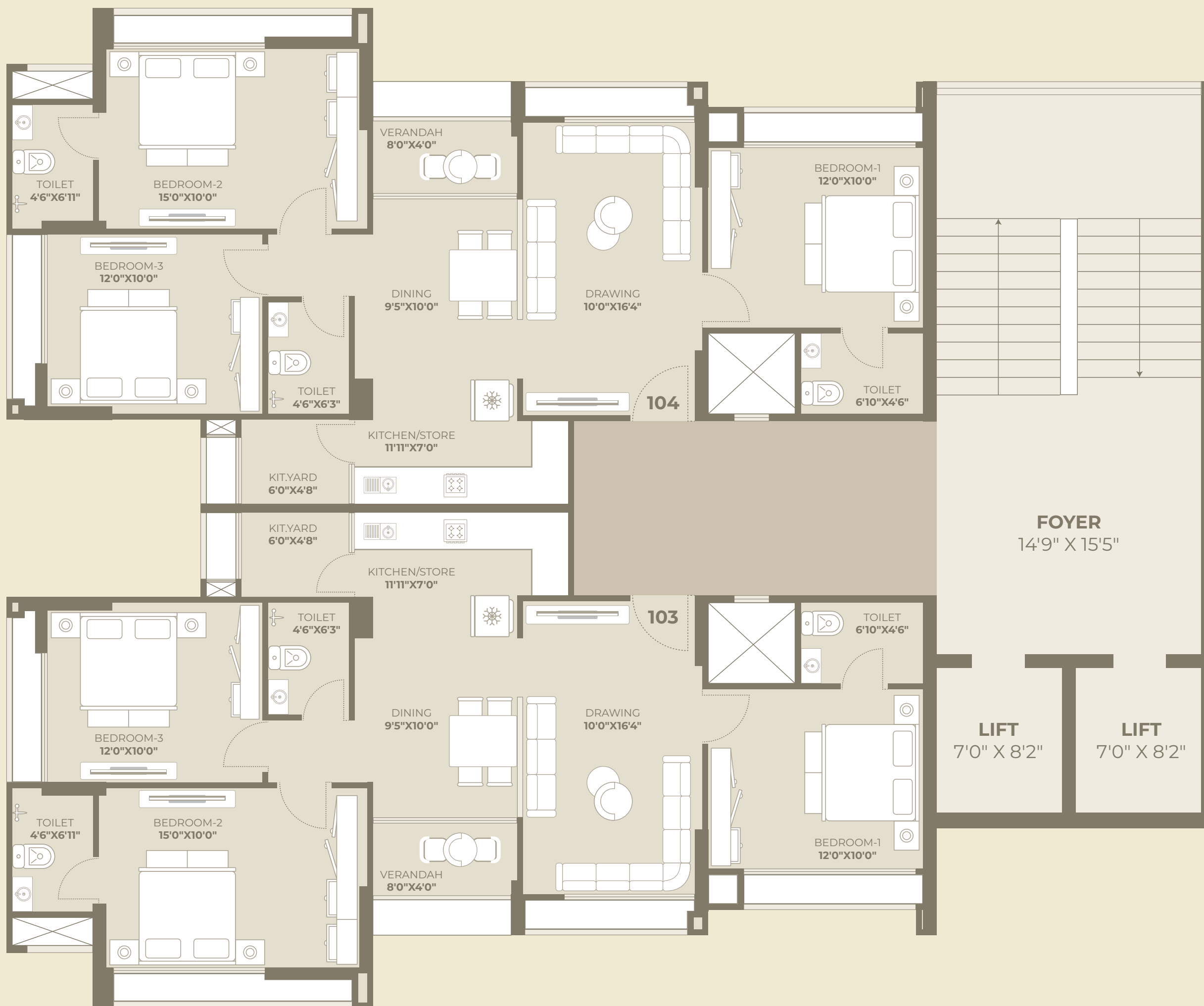
2 BHK
Unit plan
(C & D Wings)



3 BHK
Block plan
(A & B Wings)



3 BHK
Unit plan
(A & B Wings)



3 BHK
14th floor Block plan
(A & B Wings)



14TH
FLOOR
plan



Project by

Architect



APURVA AMIN ARCHITECTS

ATTRIBUTES & SPECIFICATIONS



STRUCTURE

Our apartments are built on an earthquake-resistant R.C.C. frame structure to ensure the safety and security of our residents.



DOORS & WINDOWS

We understand that your front door is the first impression of your home. That's why our main door comes with a decorative veneer finish with a wooden frame. All other doors are flush doors with wooden frames. Our windows are aluminum sliding windows with stone sills to add a touch of elegance to your home.



ELECTRIFICATION

At Savera Prarambh, we understand the importance of electrical safety. That's why all our apartments come with concealed copper wiring with modular switches and sufficient points, including AC and geyser points. Our switches and cables are ISI certified to ensure that they meet the highest standards of safety.



ELEVATORS

We have installed belt-operated gearless elevators with an Automatic Rescue Device (ARD) system to ensure that you have a safe and smooth ride every time.



TOILET & PLUMBING

Our apartments come with designer glazed tiles up to the lintel level and premium quality bath fittings and sanitary wares to provide you with a luxurious and comfortable experience.



FLOORING

We have used 800x800 good quality vitrified tiles for the flooring of our apartments. Our balconies feature vitrified rustic tiles, and we have used china mosaic for heat reflection and waterproofing treatment in the terrace.



KITCHEN

The kitchen is the heart of the home, and we have designed it to meet all your cooking needs. Our apartments come with a granite top platform with an S.S. sink and designer glazed tiles up to the lintel level.



WALL FINISH

We have used a single coat of internal mala plaster with putty finish and an external double coat texture with acrylic paint to give your home a smooth and elegant finish.



Site Address

Behind kavisha Panaroma,
Opp Swastik Vivanta,
South Bopal Extension Road,
Chuma, Ahmedabad.



Disclaimer: This brochure/document does not constitute an offer and/or acceptance and/or contract and/or agreement and/or transaction and/or any intention thereof of any nature whatsoever. The layout plan, numbers, buildings, wings, structure, common areas, facilities, information, images, sketches, visual references, specifications, and other details herein are purely indicative and subject to change without prior notice. The developer reserves the right to make additions, deletions, or modifications to the project or any part thereof at their sole discretion. The actual product may vary/differ from what is indicated herein. All dimensions mentioned in this document may vary/differ due to construction exigencies. The photographs contained herein are stock/standard images used to indicate a conceptual development/lifestyle, and have been taken at a location other than Savera Prarambh project site. No representation or warranty is made or intended as to the accuracy or completeness of the information herein or as to its suitability or adequacy for any purpose. The final product is subject to approval by the competent authority and prevailing law/act/guideline at the time.



Head Office Address

3rd Floor KIFS House, Near Hotel Landmark, Ambli Bopal Road, Ahmedabad - 380058.

+91 9090547000 | Sales@shyaswa.com | www.shyaswa.com

RERA Registration Number: PR/GJ/AHMEDABAD/AHMEDABAD CITY/Others/RAA12375/041023 | www.gujrera.gujarat.gov.in