



Opp. Popular Paradise, Satyamev Vista Road, S.G. Highway, Gota, Ahmedabad.
Contact: **+91 98098 43030**

Project By



Architect



Structure



Rera Reg. No.: PR/GJ/AHMEDABAD/AHMEDABAD CITY/AUDA/RAA09415/031221 | gujrera.gujarat.gov.in

HANDOVER | 90 1625 1626



2 BHK Ultra Living Apartments



BECAUSE YOU NEED BETTER

View is enough to send the vibes of grandiose.

A look at Solitaire Vista 2 is enough to make You envisage the grand life you are going to Spend here.

The imposing structure of Solitaire vista 2 is a Testimony that here dwells the life beyond Ordinary.

LIVE LAUGH LOVE

Discover the real joy and feel of
Immensity.

Planning that makes this aesthetically
Marvellous piece of structure both spacious
and special.

The space will impact the rays of positive
Sensations surrounding your dearest abode.





PLACE BECOMES STATUS

Meet & Greet the grandeur... Everyday.
Enchanting meadows where everyday a sunrise
Fills you up with an energy to chase dreams and
Fulfill them.

Glimpse of a life..as picturesque as it can be.

An elevation says thousand words and sometimes
View is enough to silence thousand doubts.





FACILITY THAT MATTERS

KIDS PLAY
ZONE



SENIOR
SEATING AREA



SECURITY
CABIN WITH GATE



CCTV
CAMERA



DROP OFF
ZONE



ACTIVITY
ROOM



GYM



CLUB
HOUSE



PARKING SPACE



SPECIFICATION THAT GIVES YOU CONFIDENCE



STRUCTURE

- All plan as per architectural drawing & by AMC.
- Quality controlled, earthquake resistance RCC frame structure.
- Underground and overhead water tank of standard size.

FLOORING

- Premium quality vitrified tiles for entire flat.
- All bathrooms with premium quality vitrified tiles on dado and anti-skid tiles for floor.

DOORS & WINDOWS

- Laminated main doors with premium quality lock system.
- All internal flush door with wooden/marble frame with SS.finish Mortis lock of standard quality.
- Powder coated or anodized windows.

KITCHEN

- Granite top kitchen platform for your designer kitchen.
- Premium sink to keep your kitchen clear and hygienic.

PLUMBING

- Pressurized water supply for all bathrooms.
- All bathrooms equipped with high end sanitary ware of Cera/hindware or equivalent brand.
- The quality brand like cera/hindware or equivalent will be Used for cp fittings for all the bathrooms.
- Standard quality cpvc pipe & drainage line are installed to Ensure easy maintenance and quality.

ELECTRIFICATION

- 3 phase concealed wiring with adequate number of points for comfort and ease
- All the boards with modular switches

LIFT & ENTRANCE

- For your comfort elevators of omega or equivalent with Complete power back up
- External lift wall cladding with/tiles/marble
- Lavish reception area for a royal welcome of your guest

GROUND FLOOR PLAN



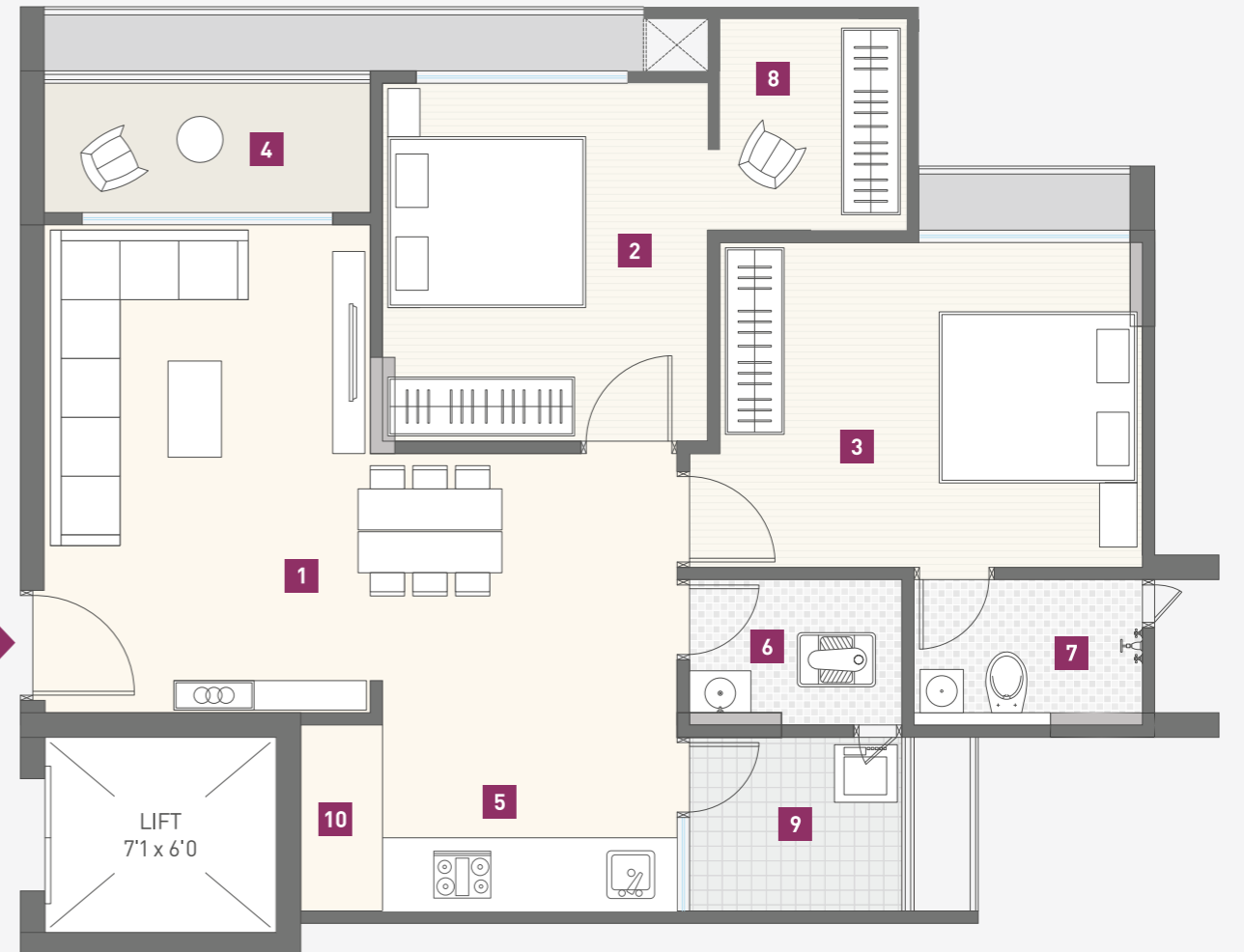
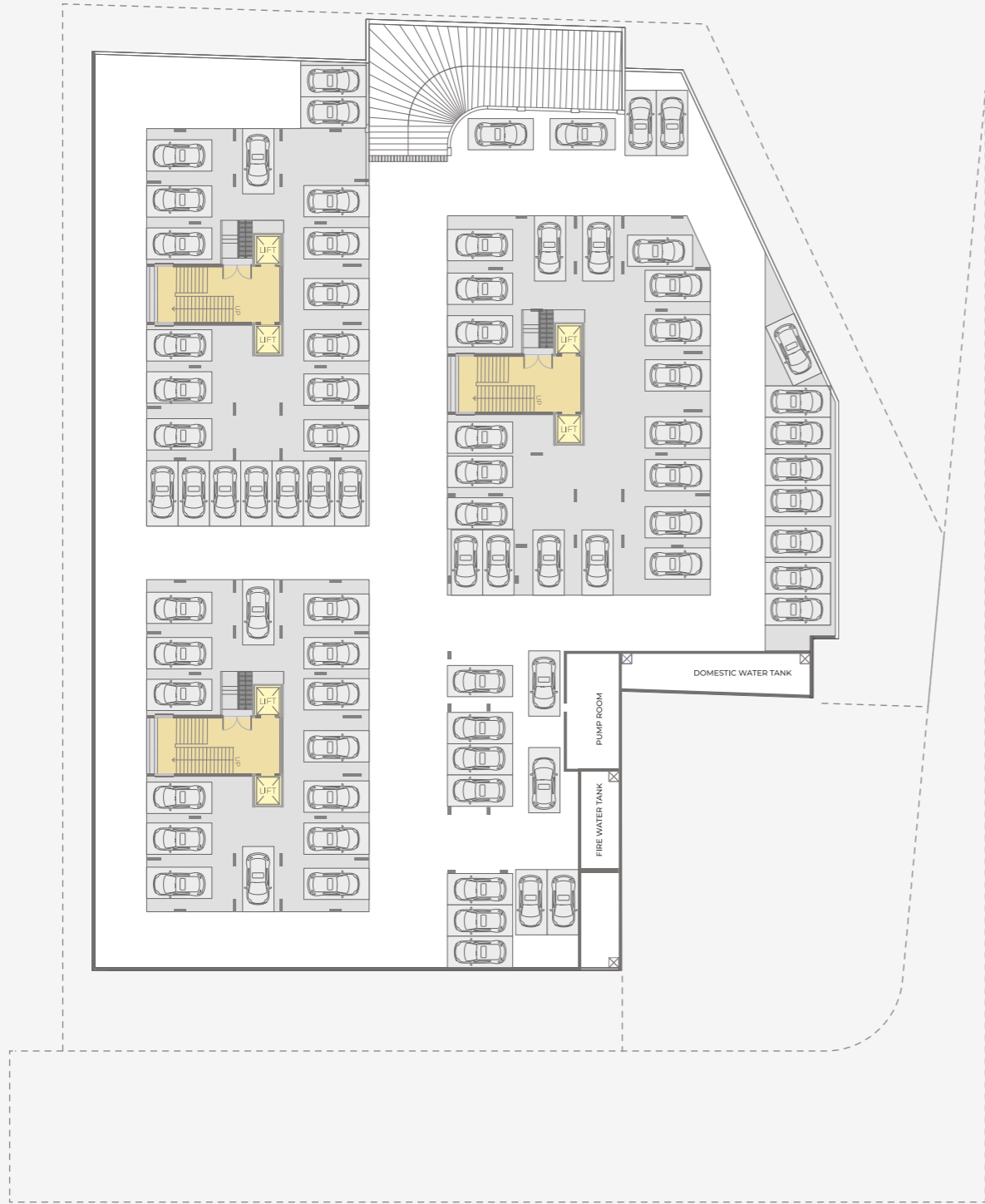
TYPICAL FLOOR PLAN

FIRST FLOOR PLAN



BASEMENT PLAN

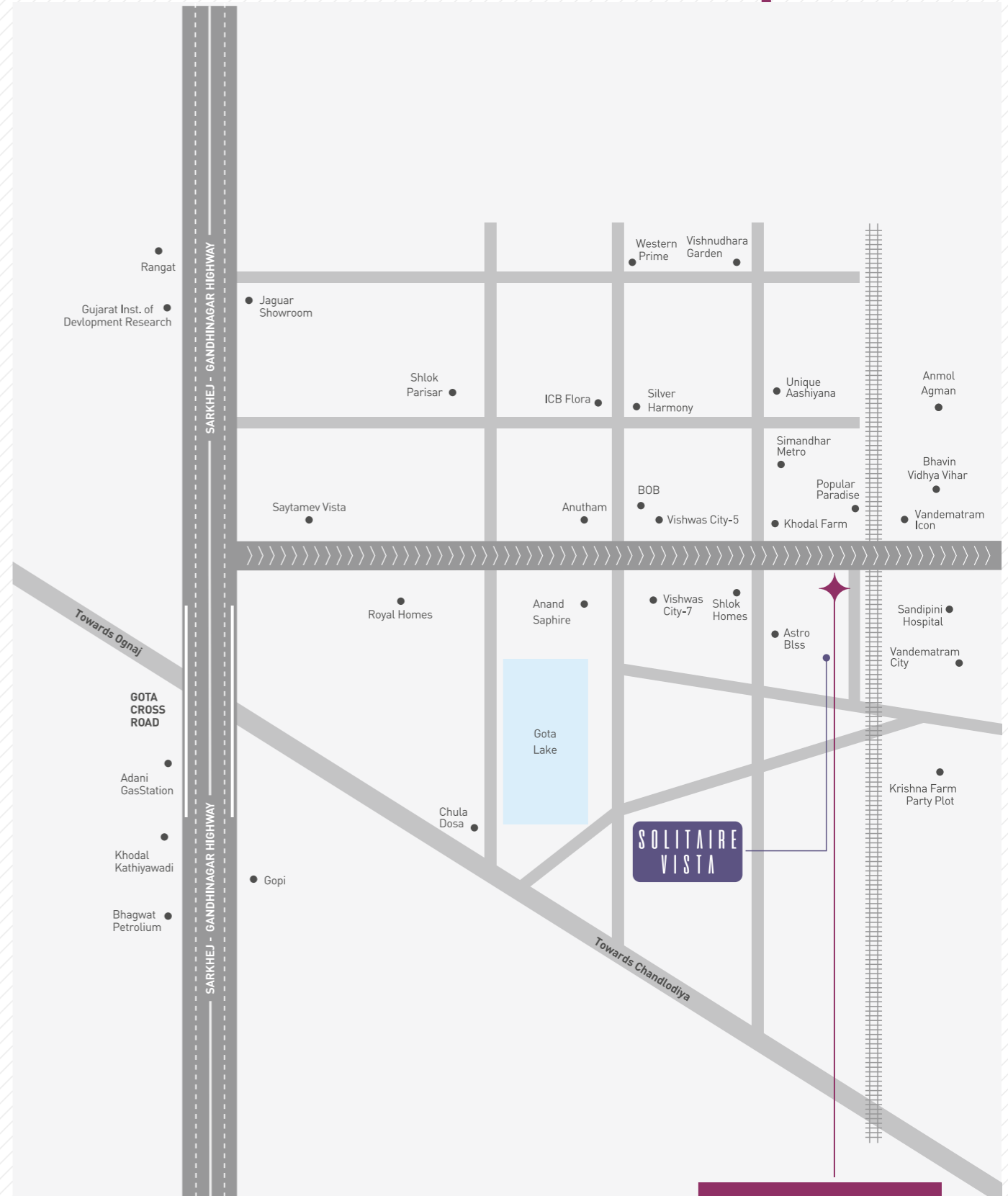
UNIT PLAN



LEGENT

1 DRAWING ROOM	10'0 x 15'0	6 TOILET 1	6'6 x 4'6
2 BED ROOM	10'0 x 11'0	7 TOILET 2	7'0 x 4'6
3 BED ROOM	13'0 x 10'0	8 STUDY / WFH SPACE	4'3 x 6'6
4 BALCONY	10'0 x 4'0	9 WASH	6'6 x 5'4
5 KITCHEN & DINING	9'0 x 14'0	10 EXTRA STORAGE	2' X 6'

LOCATION SAYS IT'S ALL



+ Torrent, Legal Charges, AMC charges, Stamp Duty, Registration Fees, GST & Any Govt. Cesses (If Applicable) etc. will be borne by the members. + Any Member whosoever is unable to pay the regular installment is liable to lose the allotment & no explanation will be entertained then after + All rights are reserved by developers to make any changes in plan, Scheme, Elevation & Dimension. Other details of layout shall be binding to all member Maintenance Deposit shall be paid separately by members + Dimensions and area indicated in brochure are indicative and approximate. + This Brochure is not a part of legal document, it is only for display purpose.