

# PROVINCE

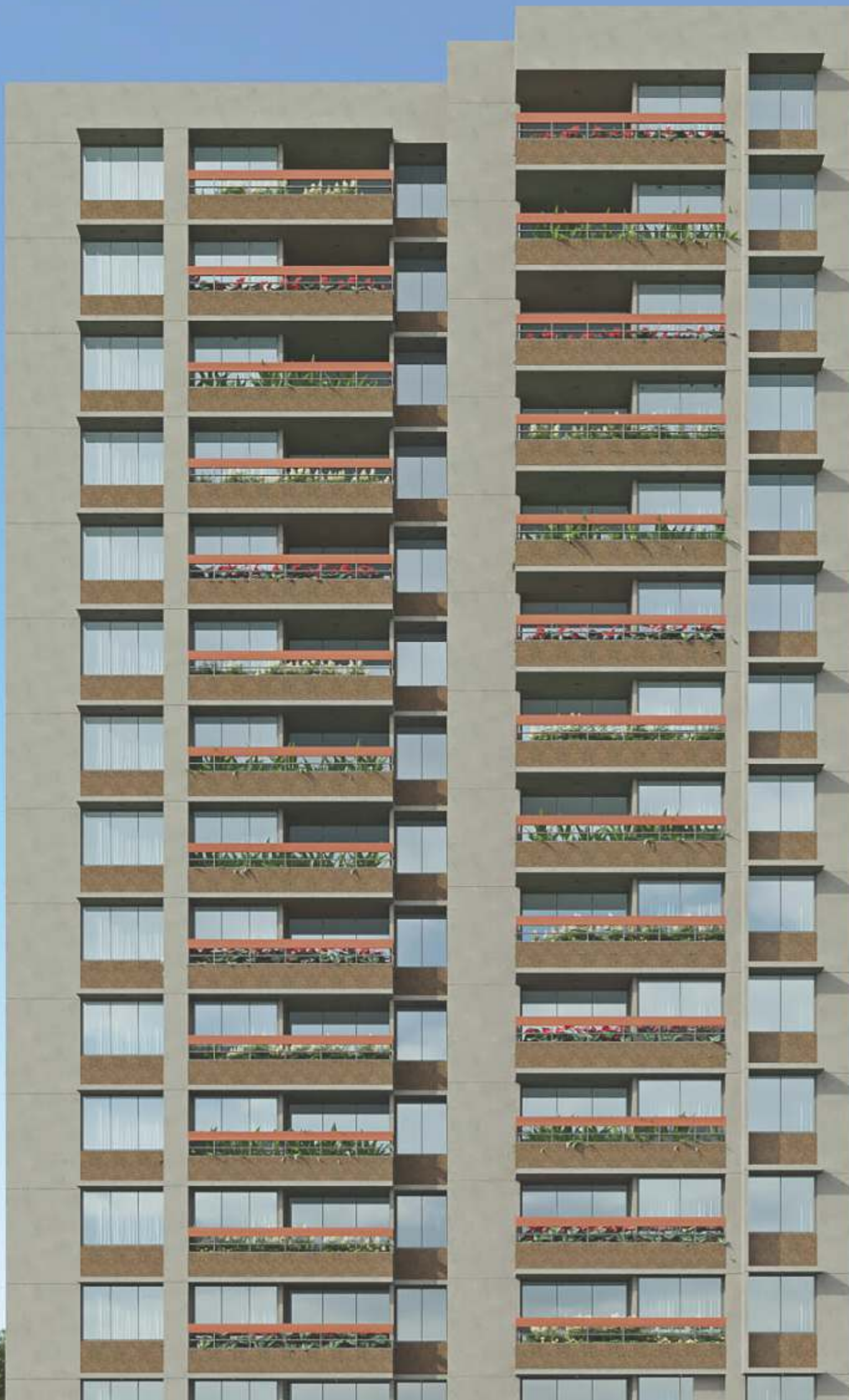
your green kingdom

3 BHK GREEN LIVING

Developer

**SANGATH®  
IPL**

group since 1981



IGBC (indian green building council)  
registered green building

long lasting rich external finishes  
of expose RCC & terrazzo

panoramic view from all flats

3 level parking with 2 double  
height basement

landscaped garden, Gym,  
children play area, board games,  
open play court

exclusively developed top terrace  
for common usage... sky walk,  
sit outs, planters

inviting entrance foyer  
for each block

earthquake resistant  
RCC shear wall structure

solar power for common usage

# PROVINCE

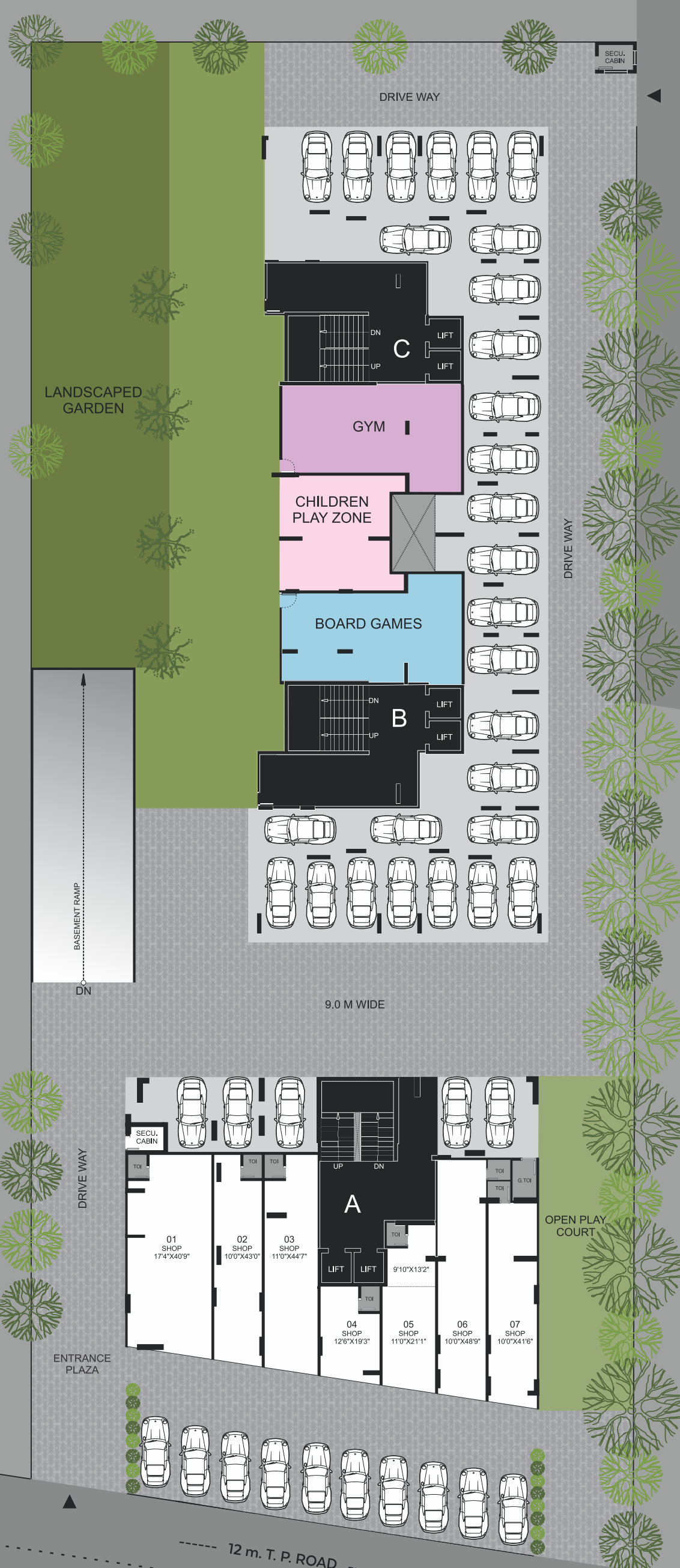
your green kingdom

The dream of your 'dream home' becoming a reality in a lifetime is an indescribable feeling! And when your dream home makes you feel special, privileged, and princely...it means you have arrived at PROVINCE - A kingdom of happiness and luxury spread on the bed of green! Soon to take shape at the most preferred location of Twin City; Province by Sangath IPL sets a new benchmark of epitomic living with its spacious and beautiful 3BHK units set amidst abundant nature and luxurious amenities.

Following in the footsteps of its predecessor Sangath IPL projects; Province also is taking shape on the foundation of green living. An IGBC registered green building project, Province by Sangath IPL again reflects the hallmark standards of quality, transparency, and trust. Since its inception, Sangath IPL projects have brought happiness and a state of fulfillment to its proud owners. From the choice of location to embracing the green living initiative or shear wall concept the group has consistently endeavoured to redefine the lifestyles in a positive way.

As the group enters the fifth decade of its shining existence, the legacy is getting shinier than ever with PROVINCE !





12M WIDE T P ROAD

# GROUND FLOOR LAYOUT

01 SHOP 17'4"X40'9"	02 SHOP 10'0"X43'0"	03 SHOP 11'0"X44'7"	04 SHOP 12'6"X19'3"	05 SHOP 11'0"X21'1"	06 SHOP 10'0"X48'9"	07 SHOP 10'0"X41'6"
------------------------	------------------------	------------------------	------------------------	------------------------	------------------------	------------------------

LANDSCAPED GARDEN

GYM

CHILDREN PLAY ZONE

BOARD GAMES

9.0 M WIDE

ENTRANCE PLAZA

OPEN PLAY COURT

12 m. T. P. ROAD

9 m. SERVICE ROAD

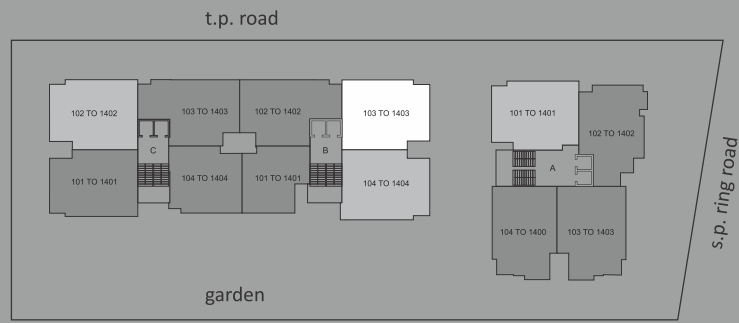
S.P. RING ROAD

< S G ROAD

AIRPORT >



**TYPICAL FLOOR LAYOUT**



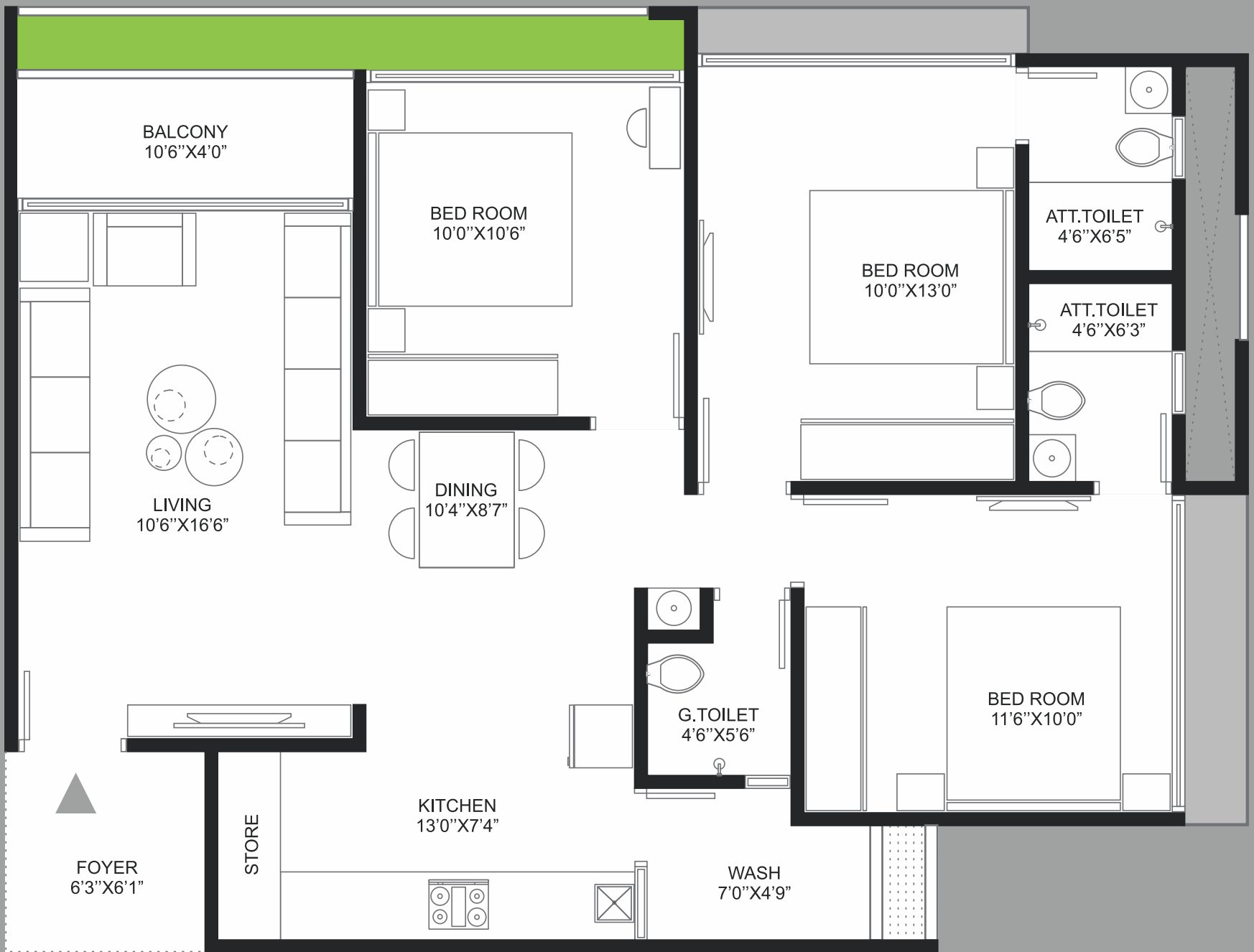
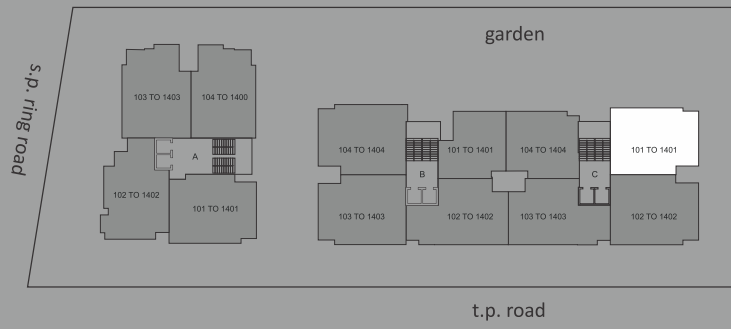
## UNIT PLAN

**A - BLOCK** 101 TO 1401

**B - BLOCK** 103 TO 1403  
104 TO 1404

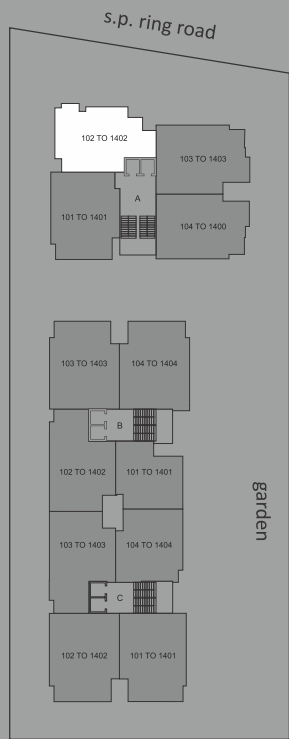
**C - BLOCK** 102 TO 1402

\* Note: Kitchen width 12'7" & foyer length 6' for unit no. A/101 to 1401



# UNIT PLAN

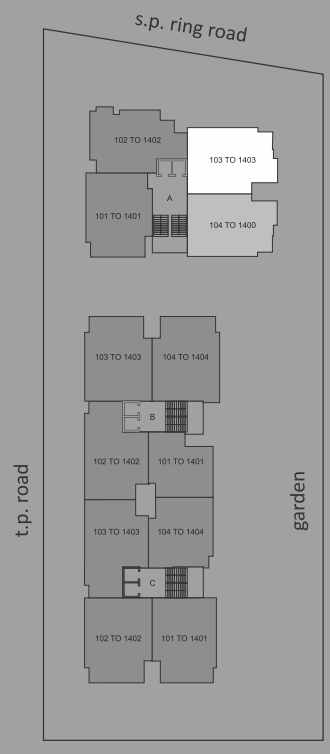
C - BLOCK 101 TO 1401



# UNIT PLAN

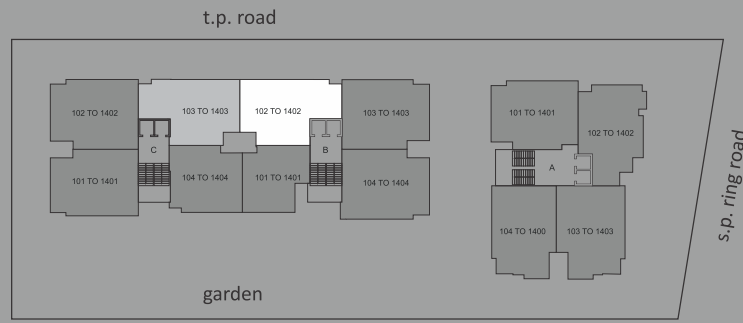
A - BLOCK 102 TO 1402





**UNIT PLAN**

<b>A - BLOCK</b>	103 TO 1403 104 TO 1404
------------------	----------------------------



## UNIT PLAN

B - BLOCK 102 TO 1402

C - BLOCK 103 TO 1403



--- METRO  
--- BRTS

Journey towards **GREEN** excellence... since 1981



site: province by sangath IPL, 200' ring road,  
nr. vaishnodevi u/p, zundal, ahmedabad-382421

E : [sales@sangathipl.com](mailto:sales@sangathipl.com)

PH : + 91 909000 1981

W : [www.sangathipl.com](http://www.sangathipl.com)

rera no.: PR/GJ/GANDHINAGAR/GANDHINAGAR/Others/MAA10775/141022 [www.gujrera.gujarat.gov.in](http://www.gujrera.gujarat.gov.in)

