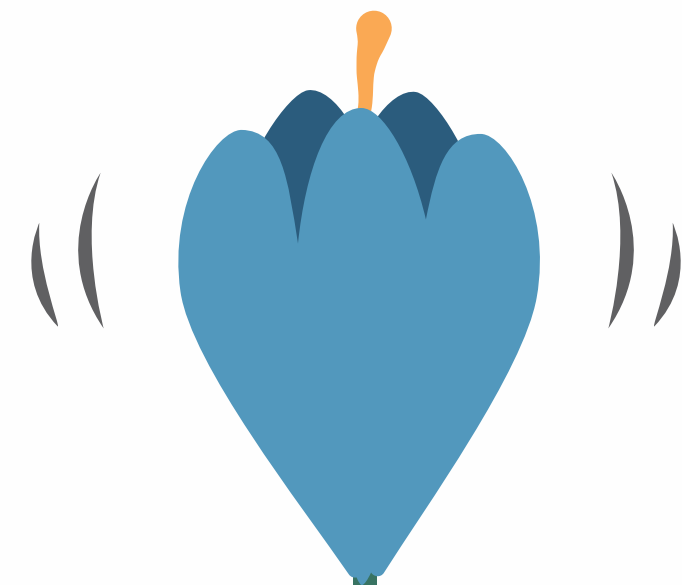


SOUNDS OF  
SURROUNDING NATURE!



FRAGRANCE OF A  
NEW HOME!



A PROJECT BY

 **Khwaish**  **SHREERANG**

## THE BLOOMING BLUE BELL

THE BLUE BELL FLOWER IS LIKE A PIECE OF THE SKY THAT HAS FALLEN TO EARTH AND IS A TESTAMENT TO THE POWER OF NATURE'S ARTISTRY, BRINGING COLOR AND JOY TO THE WORLD AROUND US.

THE BLUEBELL SYMBOLIZES THANKFULNESS, HUMILITY, CONSTANCY, AND EVERLASTING LOVE IN THE LANGUAGE OF FLOWERS.

WHEREAS BLUE DENOTES THE PLACE'S SERENITY AND TRANQUILLITY AND THE BELL EXPRESSES THE SPIRITUAL SOUND OF THE SURROUNDINGS LIKE A GENTLE MELODY, THE BLUEBELL FLOWER WHISPERS ITS BEAUTY INTO THE WIND, INSPIRING US TO SEE THE WONDER IN THE WORLD.



# Bluebell

2 & 3 BHK HOMES

## DEVELOPING THE BLUEBELL AROMA IN THE SURROUNDING

TO SPREAD THE FRAGRANCE OF BLUE-BELL, IT IS COMING UP WITH 2-3 BHK LUXE LIVELY HOMES WITH SPACIOUS GRAND SHOPS TO INCULCATE BUSINESS ACUMEN. SO, COME AND EMBRACE THE MODERN WAY OF LIFE.

A PROJECT BY

 **Khwaish** 



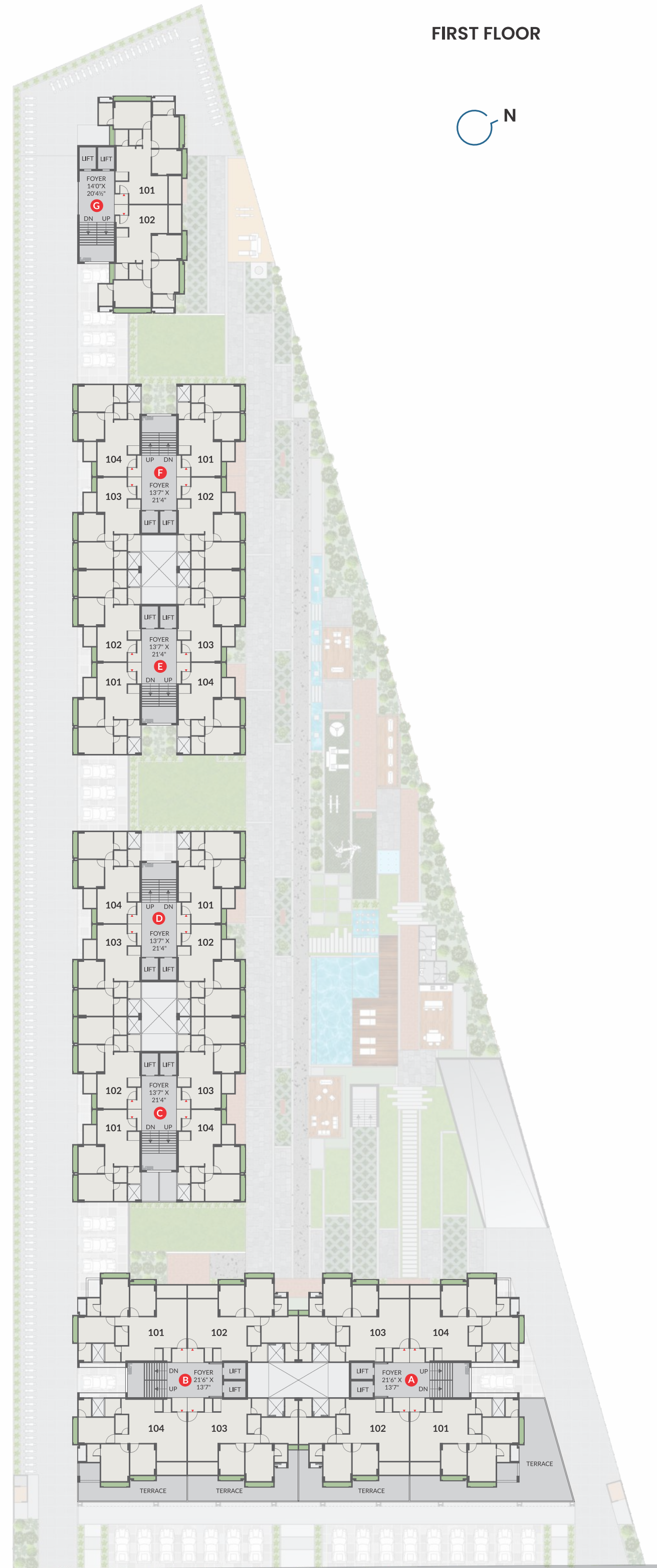
Artist's impression.

### GROUND FLOOR

- 1 MULTIPURPOSE HALL
- 2 PLAY COURT-1
- 3 INDOOR PLAY AREA
- 4 GYM
- 5 YOGA
- 6 PLAY COURT-2
- 7 SWING SEAT OUTS
- 8 HOME THEATRE
- 9 LIBRARY WFH
- 10 SWING SEAT OUTS
- 11 PLAY COURT-3
- 12 INDOOR PLAY AREA
- 13 TODDLERS PLAY AREA
- 14 SAND PIT
- 15 TEMPLE
- 16 GAZEBO
- 17 WALKWAY
- 18 SWING PARK
- 19 KIDS PLAY AREA
- 20 PLAZA
- 21 BABY POOL
- 22 SWIMMING POOL
- 23 DECK
- 24 CAFETERIA
- 25 LAWN



### FIRST FLOOR

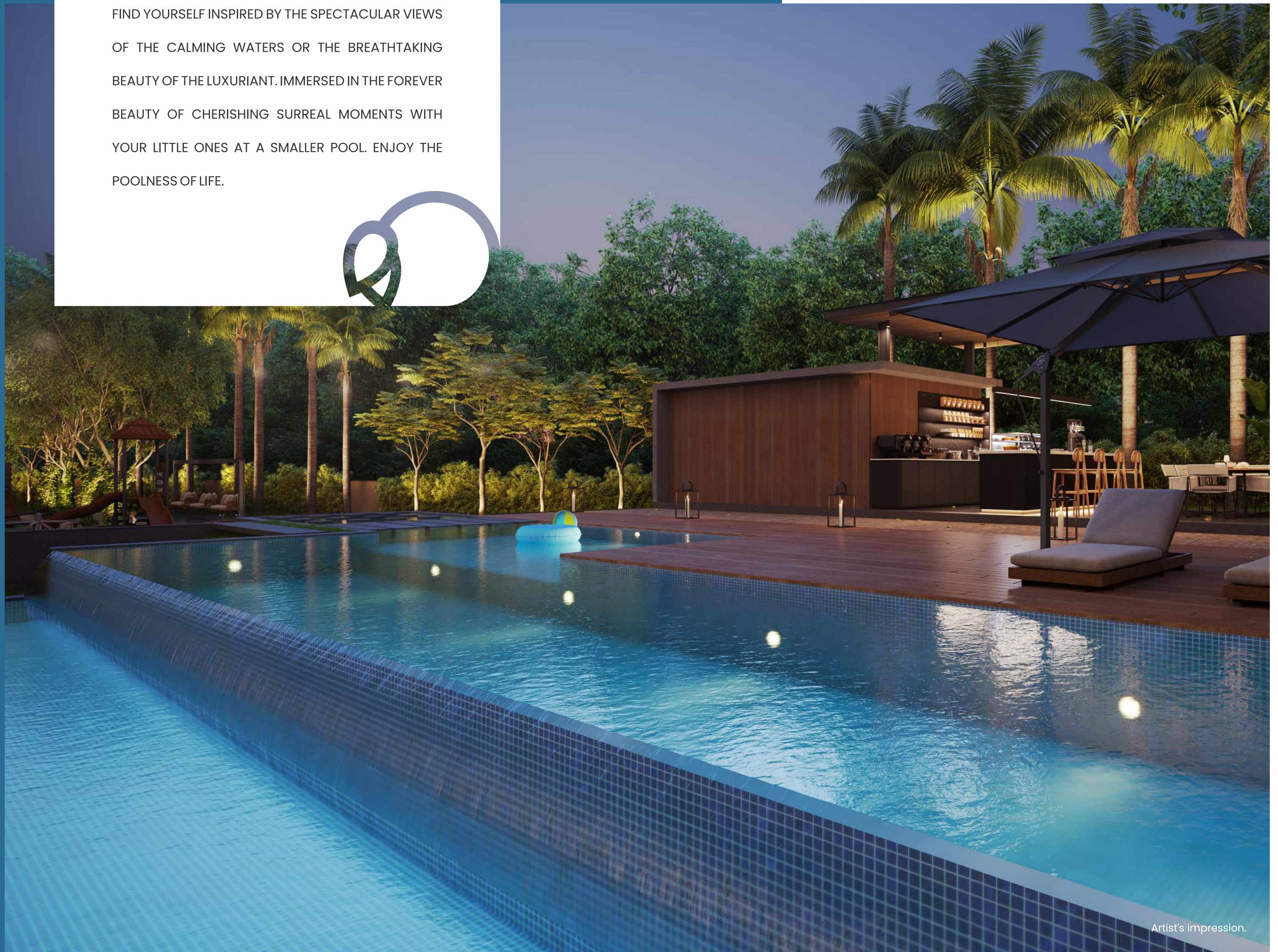


30 MTR WIDE ROAD

30 MTR WIDE ROAD

SUBMERGE IN THE  
**SWIMMING POOL**  
FOR RELAXATION

FIND YOURSELF INSPIRED BY THE SPECTACULAR VIEWS  
OF THE CALMING WATERS OR THE BREATHTAKING  
BEAUTY OF THE LUXURIANT. IMMERSSED IN THE FOREVER  
BEAUTY OF CHERISHING SURREAL MOMENTS WITH  
YOUR LITTLE ONES AT A SMALLER POOL. ENJOY THE  
POOLNESS OF LIFE.



Artist's impression.

GET WISDOM AT  
LIBRARY AND FIND  
CONVENIENCE AT WFH

BLUEBELL HAS YOUR CABIN READY  
FOR REMOTE WORK. FEEL THE  
ENERGY OF A DYNAMIC  
WORKSPACE. ADDITIONALLY, THE  
NEARBY LIBRARY OFFERS A FRESH  
WORLD OF KNOWLEDGE.



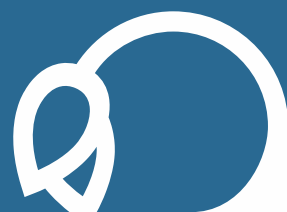
Artist's impression.

YOUR  
WALK WAY TO  
WALK WITH NATURE

DON'T WISH FOR IT. WALK FOR IT. IN  
EVERY WALK WITH NATURE, YOU  
RECEIVE FAR MORE THAN YOU SEEK  
AND WALK THE SOUL BACK HOME.



Artist's impression.





Artist's impression.

STIR THE SOUL AT  
**GRAND GAZEBO**  
WITH YOURSELF

ENJOY THE BREATHTAKING HUES OF THE SUNSET. UNWIND YOURSELF IN THE SERENE SPACE AND SEIZE THE BEAUTIFUL MOMENT WITH YOUR PICTURE-PERFECT FAMILY.



Artist's impression.

LAVISH  
**LAWN AREA TO**  
RE-ENERGIZE YOUR LIFE

IF THERE'S MAGIC ON THIS PLANET, IT'S CONTAINED IN THE GRASS OF THIS CALM AND LUSH GREENLAND WHICH CONNECTS DIRECTLY TO THE ENVIRONMENT OF PRECIOUS PLAZA.



JOYFUL  
KIDS' PLAY AREA  
TO ENJOY

THE PERFECT BLEND OF FREE AS WELL AS STRUCTURED PLAY AREAS TO REPLENISH THE DAILY QUOTA OF AMUSEMENT AND WHERE PARENTS CAN HAVE QUALITY TIME TOGETHER WITH EACH OTHER.



FUN-FILLED  
TODDLER ZONE  
FOR YOUR LI'L ONES

RELISH CHEERFUL GAMES, ACTIVITIES, AND ENTERTAINMENT WITH YOUR BABY. CREATE ENDURING EXPERIENCES WITH YOUR LITTLE ONES BY JOINING THEM AT TODDLER ZONE.





FUNCTIONAL AND AESTHETIC  
**BANQUET HALL**  
HOST MEMORIES

UNLEASH YOUR IMAGINATION WITH OUR BANQUET HALL WHICH TRANSPORTS YOU TO AN ENCHANTED LANDSCAPE OF AMUSEMENT. COME AND EXPERIENCE A MAGICAL CELEBRATION LIKE NEVER BEFORE!



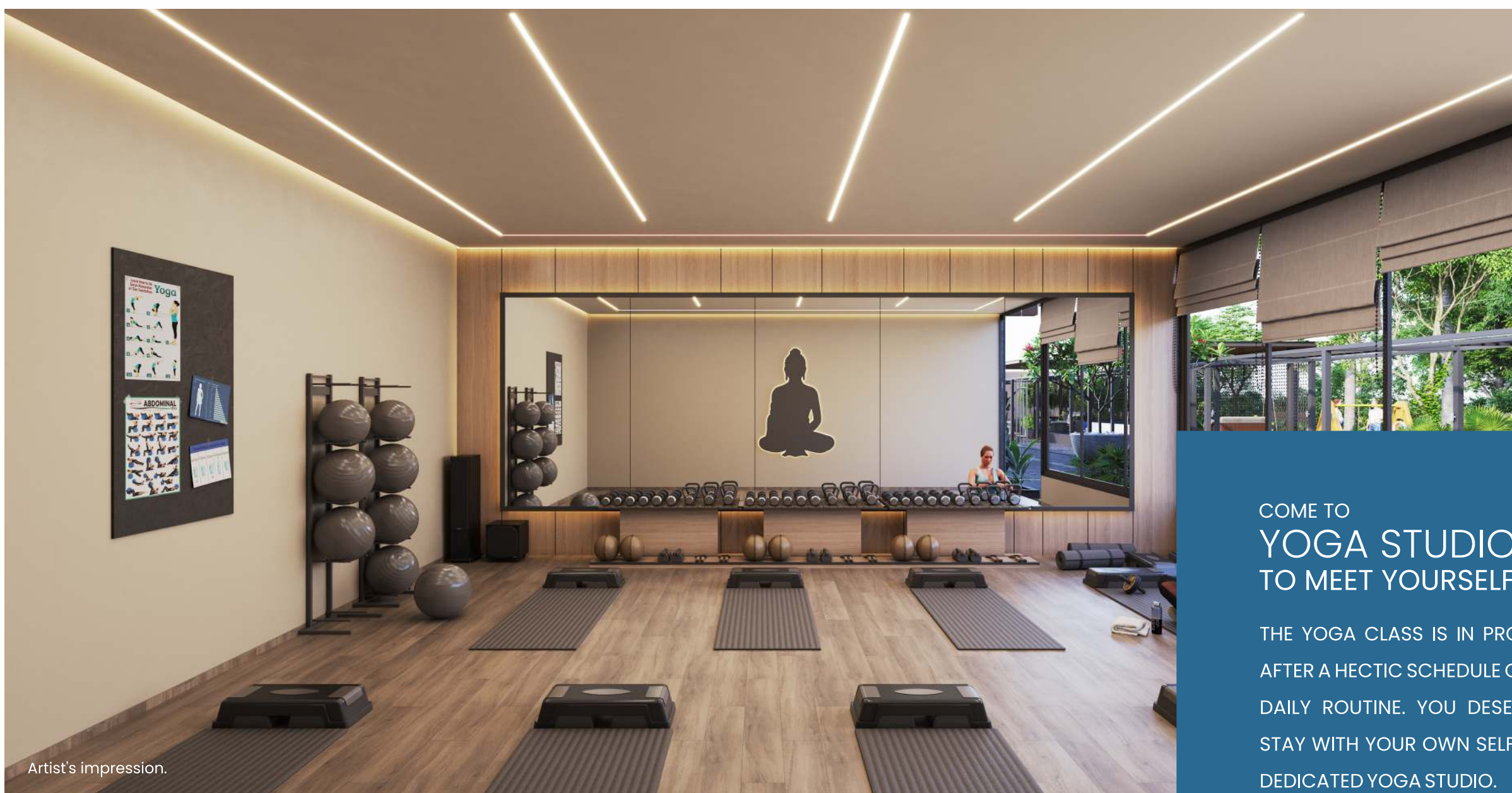
Artist's impression.



Artist's impression.

WORKING OUT EVERY DAY AT  
**OUR GYM AND**  
BOOST YOUR POWER

STRETCH YOURSELF FROM YOUR  
COMFORT ZONE AND FIND A WAY  
TO ENHANCE YOUR STRENGTH AT  
OUR STATE-OF-THE-ART GYM.



Artist's impression.

COME TO  
**YOGA STUDIO**  
TO MEET YOURSELF

THE YOGA CLASS IS IN PROGRESS.  
AFTER A HECTIC SCHEDULE OF YOUR  
DAILY ROUTINE, YOU DESERVE TO  
STAY WITH YOUR OWN SELF AT THE  
DEDICATED YOGA STUDIO.



LAUGH OUT LOUD AT MINI  
**THEATRE WITH  
YOUR BELOVED ONES**

GET A SURREAL EXPERIENCE OF  
FANTASTIC ENTERTAINMENT WITH  
YOUR BELOVED ONES WATCHING  
YOUR FAVOURITE FLICK IN THE  
SMOOTHNESS OF YOUR HOME.



Artist's impression.

UNLEASH YOUR COMPETITIVE SIDE  
**AT GAME ROOM  
WITH YOUR FRIENDS**

INDULGE IN NEVER-ENDING LEISURE.  
A PERFECT RETREAT FOR GAME  
ENTHUSIASTS. EXPERIENCE THE  
THRILL OF INDOOR GAMING IN THE  
GAMEROOM.



Artist's impression.

FULL-FLEDGED  
**CAFETERIA WITH  
LOUNGING DECK**

CREATING A STRIKING BALANCE BETWEEN MERRIMENT  
AND GOURMET PLEASURE AT THE EATERY WITH A  
NEIGHBORING DECK. MAKE THE EXPERIENCE  
MEMORABLE WITH DELECTABLE FOOD SPREAD BY THE  
POOL. CALL FOR DELIGHTFUL TREATS AND BESPOKE  
INDULGENCES.



COMFORTING  
AMENITIES TO  
MAKE YOUR DAY BETTER



Artist's impression.

GYMNASIUM

YOUR  
HEALTH

YOGA AREA

MULTIPURPOSE  
HALL

OCCASIONS &  
SPORTS

PLAY-COURT

HOME  
THEATRE

SOME INDOOR  
FUN

INDOOR  
PLAY AREA

SWING CART

FOR YOU & YOUR  
KIDS

PLAZA

SWING  
SITOUT

LEISURE & QUALITY  
TIME

LOUNGE

FOYER

SPACE AND  
LUXURY

BUILDING  
BLOCK FOYER

GARDEN  
STORE

MAINTENANCE &  
PARKING

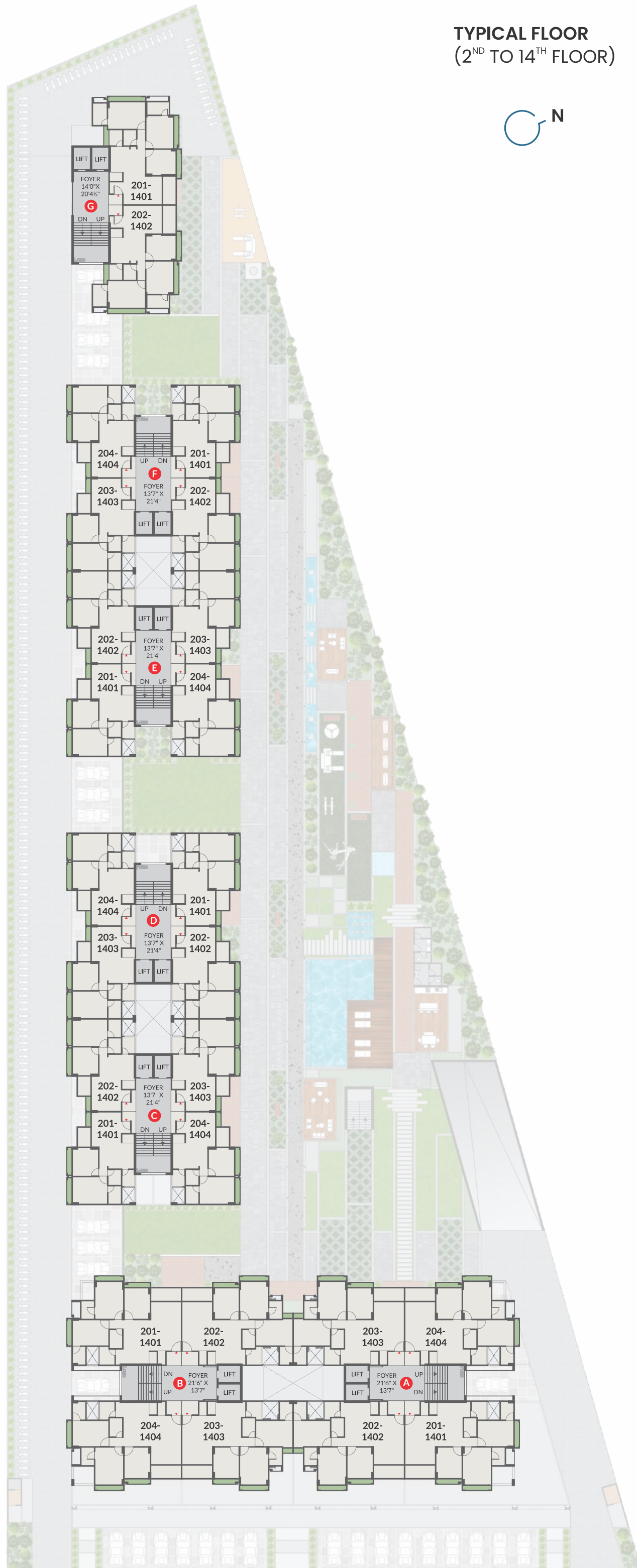
2 LEVEL  
BASEMENT

COMMON  
TOILET

CONVENIENCE &  
QUERIES

MANAGER  
OFFICE

**TYPICAL FLOOR**  
(2<sup>ND</sup> TO 14<sup>TH</sup> FLOOR)



## SPECIFICATIONS

### STRUCTURE

- Earthquake resistant structure.

### WALL FINISH

- Inside wall plaster with putti finish.
- Double coat plaster with texture paint on external walls.

### DOOR AND WINDOWS

- Main door: Designer flush door with natural veneer, with wooden frame.
- Other door: Flush door with wooden frame.
- Windows: Premium quality aluminum windows.

### FLOORING

- Vitrified flooring in living, dining, kitchen and all bedrooms.

### KITCHEN

- Mirror polished granite platform with premium quality stain proof SS sink.
- Decorative tile dado lintel level.

### BATHROOM AND PLUMBING

- Vitrified tiles till lintel level.
- CPVC - UPVC pipes and branded accessories with company warranty.
- Branded ceramic fittings.
- Electric geyser point and exhaust fan provision in all bathrooms.

### WASH AREA

- Vitrified tiles floor in wash area.
- Dado glaze tiles.
- Electric & plumbing points for washing machine & water purifier.

### ELECTRIFICATION

- Three phases conceal copper wiring with ISI wires & branded modular switches.
- ELCB / MCB with internal distribution board.
- Provision for TV cable & telephone points.

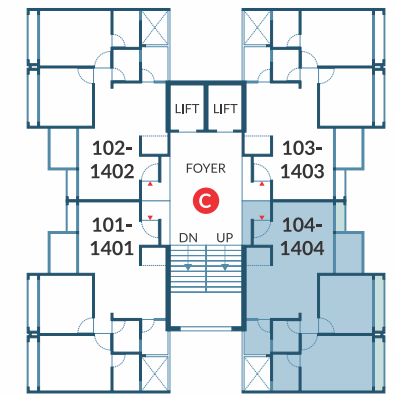
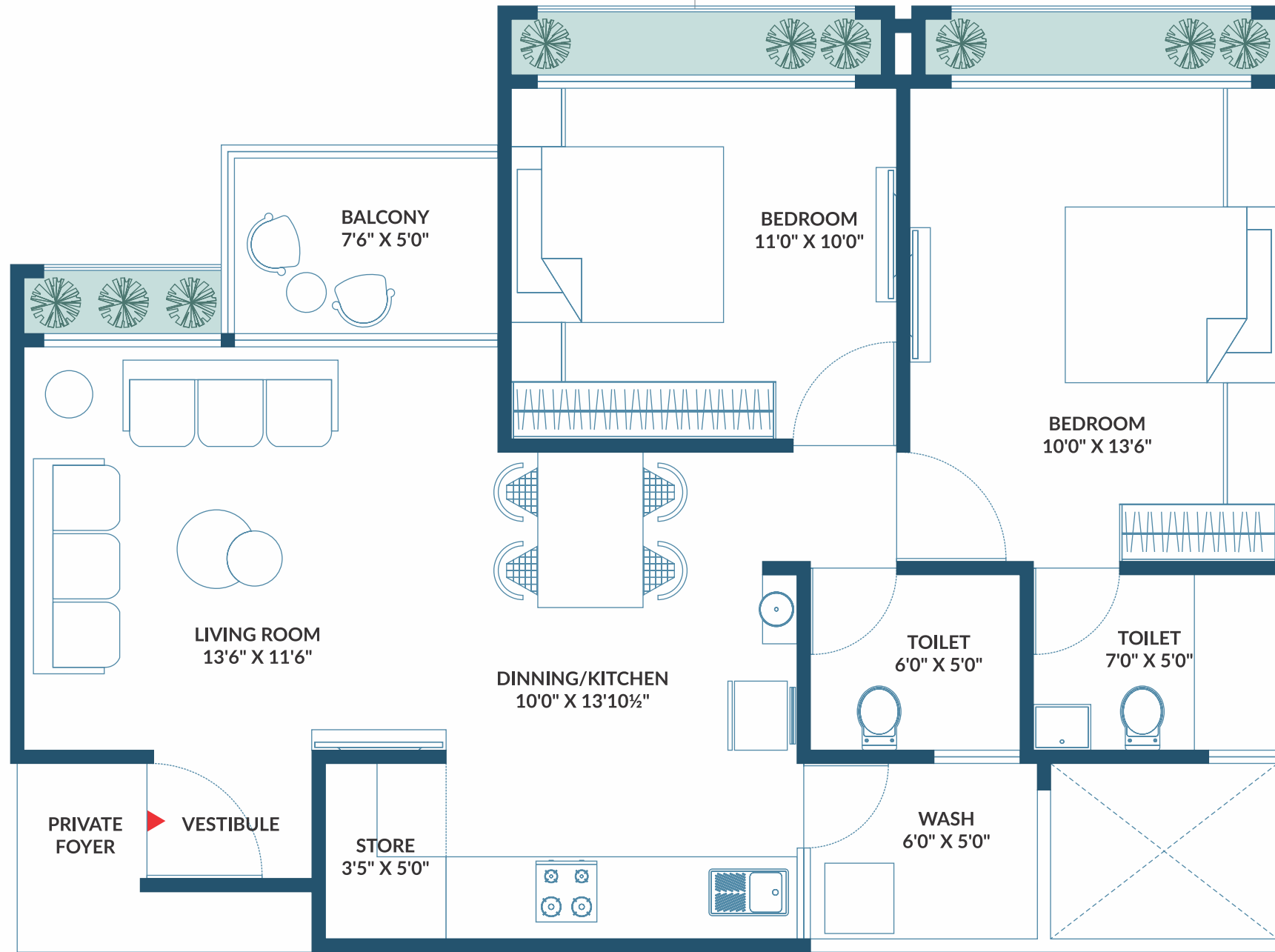
### TERRACE

- Tile / China mosaic in terrace area with water proofing.

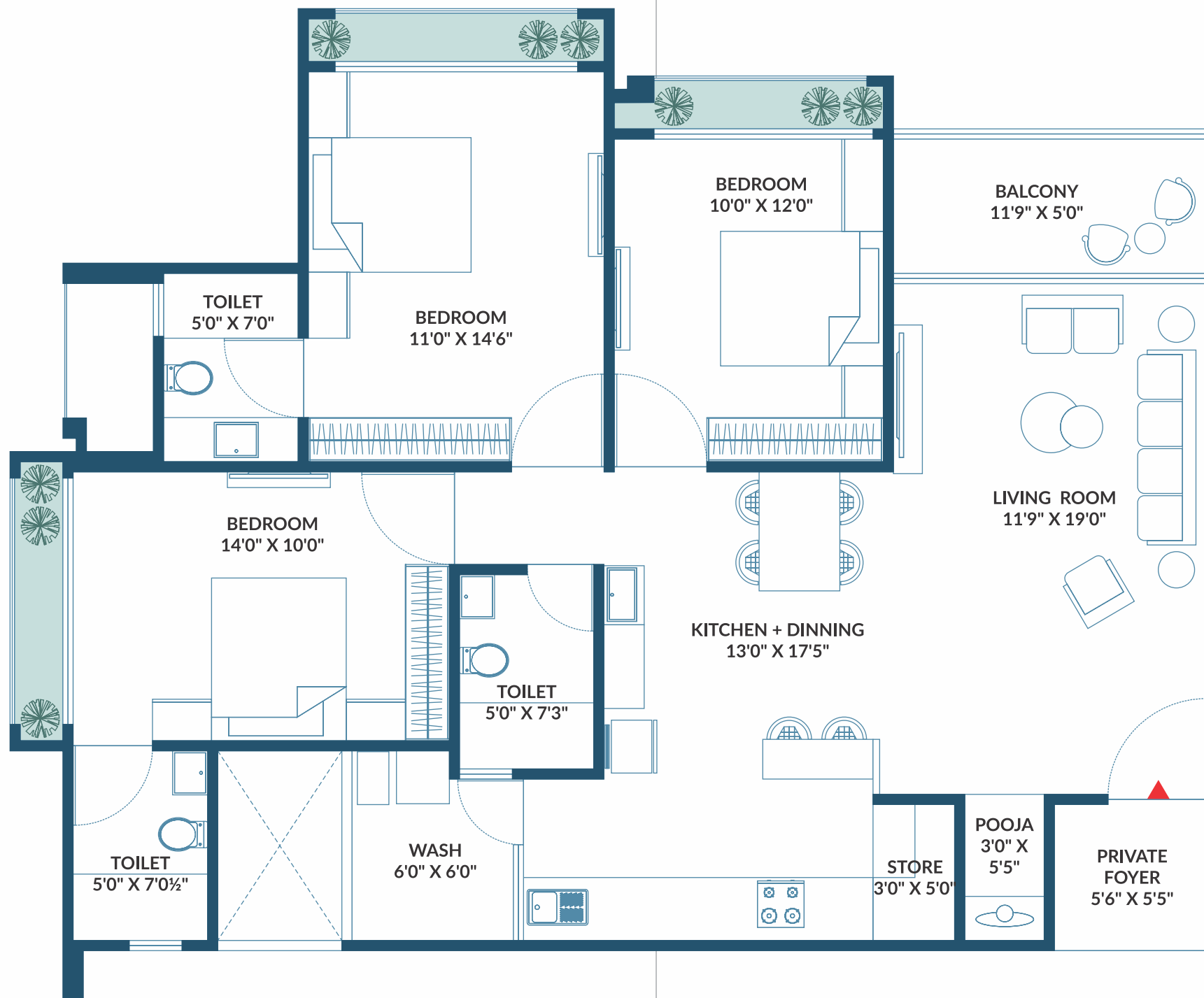
### SOLAR PANEL SYSTEM

- For common facilities.

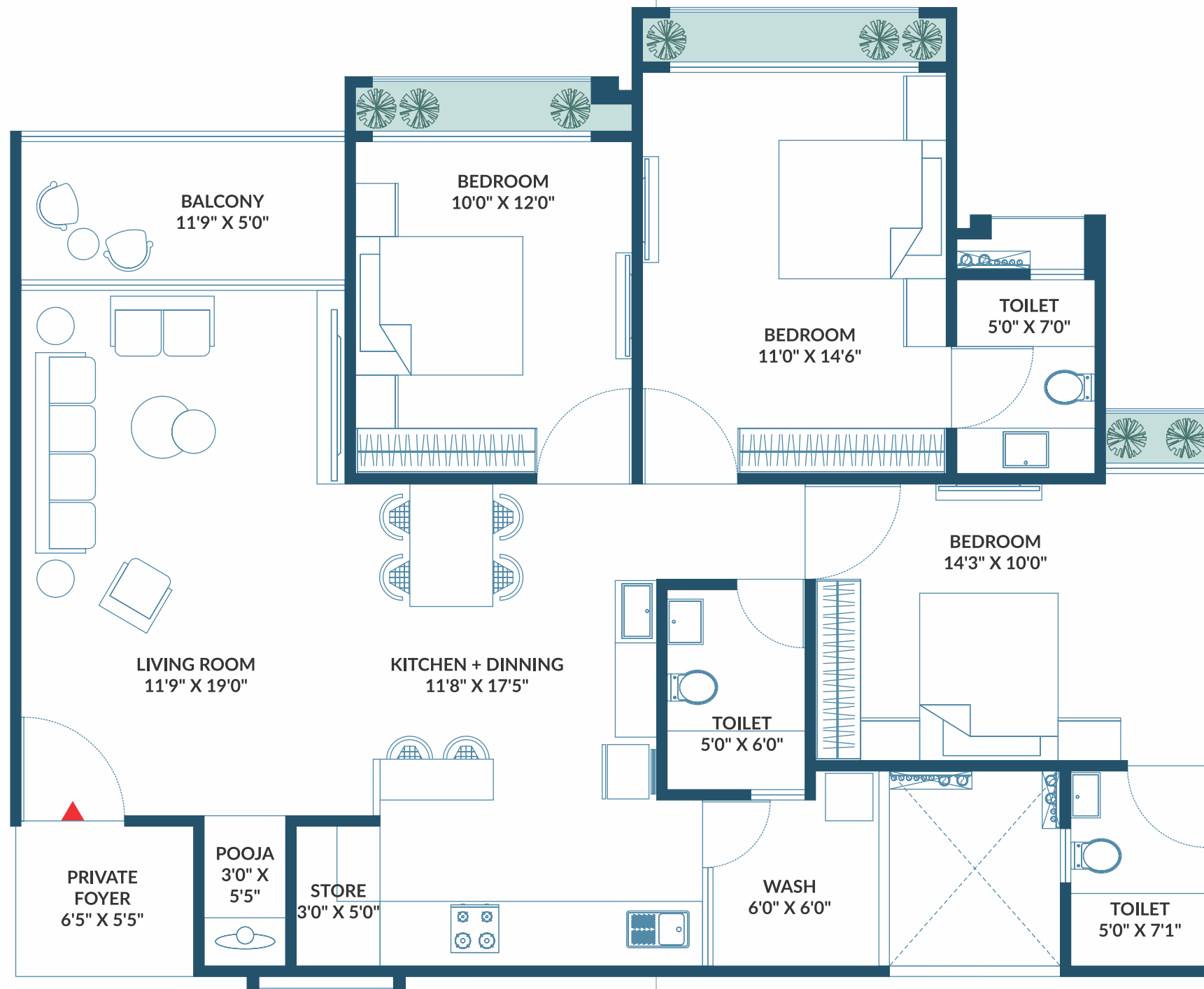
**2 BHK UNIT**  
BLOCK - C, D, E, F



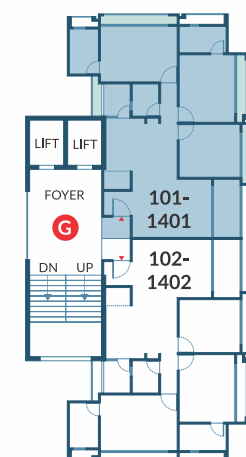
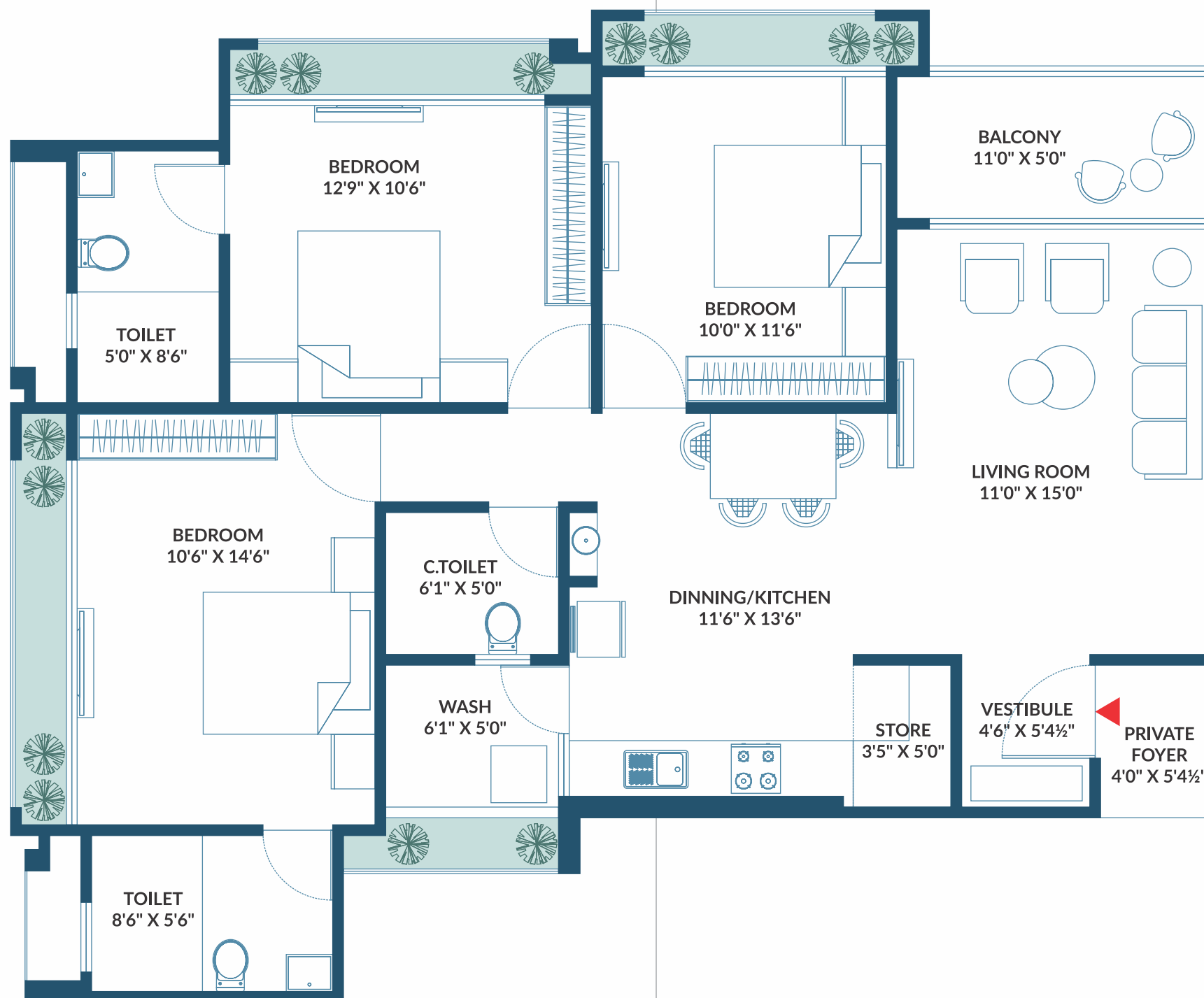
**3 BHK UNIT TYPE - I**  
BLOCK : A, B



**3 BHK UNIT TYPE - II**  
BLOCK : A, B



**3 BHK UNIT**  
BLOCK : G







Artist's Impression.

SPACES OF PLEASANT ENVIRONS  
**LIVING ROOM**  
ENHANCED INDULGENCE

INDULGE IN THE SPACIOUSNESS AND SOPHISTICATED CHARM OF OUR CONTEMPORARY LIVING ROOM, WHERE A SEAMLESS FUSION OF MODERN AESTHETICS CREATES A CAPTIVATING AMBIANCE.



Artist's Impression.

RELAXING ZONES  
**BED ROOM**  
OPULENCE EXUDED

EMBRACE THE PERFECT BLEND OF SPACE, ELEGANCE, AND COMFORT IN OUR LUXURIOUS AND GRAND BEDROOM. DISCOVER THE ULTIMATE SANCTUARY OF REFINED LIVING.





Artist's impression.

Bluebell

# Bluebell

2 & 3 BHK HOMES

## SITE ADDRESS

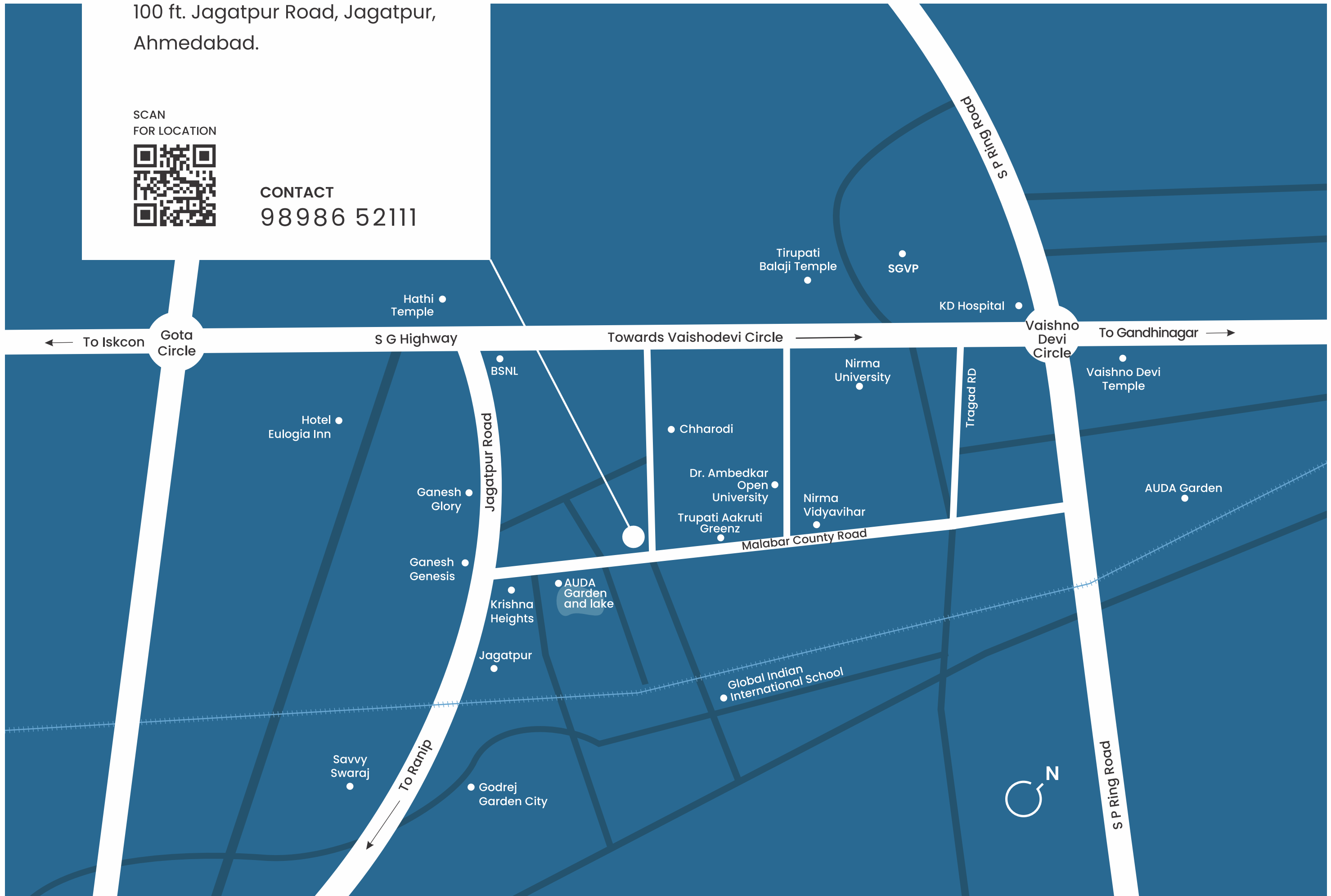
100 ft. Jagatpur Road, Jagatpur,  
Ahmedabad.

SCAN  
FOR LOCATION



CONTACT

98986 52111



## NOTE

• The brochure is for imaginative purposes and is not a legal document or a binding one. • Adani Gas line charges shall be borne by purchaser. • All dimensions shown in the plans are approximate, average unfinished and subject to variation. • The developer reserves the right to change, revise or make any modification, addition, omission or alteration in the scheme as a whole or a part thereof at their sole discretion. • Any addition charges or duties levied by the Government/Local authorities during of after the completion of the scheme will be borne by the purchaser. • Subject to Ahmedabad jurisdiction.

## DEVELOPERS

**Khwaish**

**SHREERANG**

## ARCHITECT



## STRUCTURE



## MEP CONSULTANT



PR/GJ/AHMEDABAD/AHMEDABAD CITY/AUDA/MAA12108/070723 | www.gujrerar1.gujarat.gov.in